

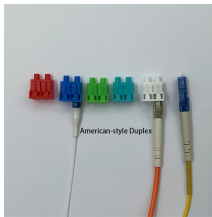
## Function of the power distribution box connection module



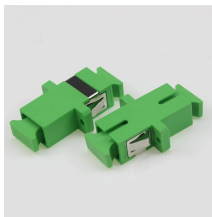
## Function of the power distribution box connection module



It acts as a protective enclosure that houses several key components, such as circuit breakers, fuses, and bus bars. These components work together to prevent electrical faults, such as ...



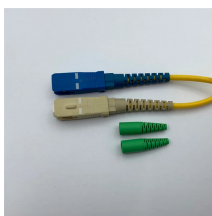
With one input and several outputs, these boxes allow multiple devices to connect through the distro instead of directly to the power supply. This setup enhances safety while making ...



Unlike standard power strips, PDUs are built to handle the demanding requirements of enterprise equipment, featuring robust construction, precise power management, and often sophisticated ...



In this article, we'll walk you through the step-by-step process of how power flows through a distribution box, what components are involved, and why each part is critical for maintaining a stable and secure ...



A Power Distribution Module (PDM) is essentially a smart fuse box that uses solid-state switches instead of traditional fuses. Think of it as the brain of your electrical system – it can turn circuits on and off, ...



The PNDB located at the front wall is equipped with three MIDI fuses which supply power to the Main Power Distribution Module. These fuse connections were relocated from the battery box in 2010 to ...



A: A junction box is primarily used to connect electrical wires, while a distribution box is designed to distribute power to various circuits. The distribution box typically contains circuit breakers ...



They manage all this power switching with solid-state electronics instead of mechanical switching relays, and monitor the current being drawn by each of the attached devices in real-time, letting them step in ...



A power distribution box (also called PDU or distro) directs electricity from a main source to multiple circuits. It acts like a hub or traffic controller, managing power flow to different areas or ...



Acting as a central hub, a distribution box receives electricity from the main power source and directs it safely to various circuits and outlets. This ensures that power flows efficiently and that ...

## Contact Us

For more information, pricing, or custom energy solutions, please contact us:

Website: <https://gdroofing.co.za>

Email: [sales@gdroofing.co.za](mailto:sales@gdroofing.co.za)

Phone: +27 72 418 9365

Address: 22 Electron Avenue, Isando, Johannesburg, 1600, South Africa

This document is for informational purposes only. Specifications subject to change without notice.

