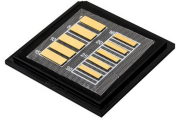


Grounding connection to distribution box



Grounding connection to distribution box



Learn how to connect equipment grounding conductors to receptacles and keep their continuity in boxes.



Following the above steps and precautions can ensure the correct connection of the distribution box grounding wire, thereby ensuring the safe operation of electrical equipment and the ...



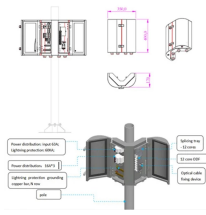
Whether you're a seasoned pro or just starting out, this comprehensive guide will give you practical insights into proper grounding techniques, with a special focus on how selecting quality materials ...



Each DISTRIBUTION BOX and controller must be grounded. On the US market, a 5.26 mm² (10 AWG) ground wire must be used, and in all other markets a 6 mm² must be used.



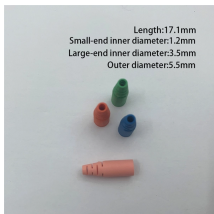
Bond all metal enclosures, raceways, boxes, and equipment grounding conductors into one electrically continuous system. Consider the installation of an equipment grounding conductor of ...



How to make proper & safe electrical ground wiring connections in the box: This article describes options for connecting a metal electrical box to the grounding conductor & connecting the ...



When inspecting the interior of a stainless steel outdoor electrical box distribution box, pay attention to the copper or tin-plated terminals on the base plate or side walls. These locations are usually marked ...



While traditionally this has been connected to 2 ground rods, in a new building it is recommended, and often required, that it be connected to an Ufer ground, which is basically a ...



Following the above steps and precautions can ensure the correct connection of the distribution box grounding wire, thereby ensuring the safe ...



This guide will walk you through the process of grounding your circuit breaker box, covering everything from identifying the components to the final connection.



By being connected in parallel with the customer distribution service entrance ground, any existing water system grounds will greatly reduce the effective ground electrode resistance of the average customer ...

Contact Us

For more information, pricing, or custom energy solutions, please contact us:

Website: <https://gdroofing.co.za>

Email: sales@gdroofing.co.za

Phone: +27 72 418 9365

Address: 22 Electron Avenue, Isando, Johannesburg, 1600, South Africa

This document is for informational purposes only. Specifications subject to change without notice.

