

Height of Wall-Mounted Power Distribution Box



Height of Wall-Mounted Power Distribution Box



Electrical enclosure sizes are not universal, but most manufacturers follow common size families. This guide explains typical wall-mount and floor-standing dimensions, how to read catalog ...



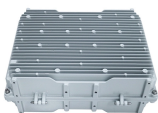
Install a distribution box at 4.5 to 5.5 feet high for safety, accessibility, and compliance. This height ensures easy use and protection from hazards.



If the height of the electrical equipment is less than 6.5 feet, but when mounted, the top of the equipment exceeds 6.5 feet, the minimum workspace height shall be equal to the height of the equipment.



Electrical enclosure sizes are not universal, but most manufacturers follow common size families. This guide explains typical wall-mount and floor ...



Before placement, you'll need to check the wall's composition and its ability to hold weight. The height of the mounting usually puts the working handles at easy-to-reach heights. Cables enter ...



Begin by mounting the power box on the wall using appropriate fasteners that can support the weight of the box and its internal components. The height should comply with local electrical ...



The work space shall be clear and extend from the grade, floor or platform to a height of 6 1 / 2 feet or the height of the equipment, whichever is greater.



FOR LIGHTING FIXTURES MOUNTING HEIGHTS SEE SCHEDULE AND DRAWINGS. 48" TO HIGHEST OPERABLE PART (SIDE OR FORWARD ACCESS). FIRE ALARM VISUAL ONLY ...



Mounting heights of electrical devices must be coordinated with architectural design and follow industry standards and legal requirements.



The height of the bottom of the box should not be less than 1.0m from the ground, and measures should be taken to prevent climbing. All the distribution boxes should be good protected ...



Choose the right box based on environment (indoor/outdoor), load capacity, and durability. Check for proper IP/NEMA ratings and material quality. Ensure safe placement: install in ...



The height of the bottom of the box should not be less than 1.0m from the ground, and measures should be taken to prevent climbing. All the distribution boxes should be good protected ...

Contact Us

For more information, pricing, or custom energy solutions, please contact us:

Website: <https://gdroofing.co.za>

Email: sales@gdroofing.co.za

Phone: +27 72 418 9365

Address: 22 Electron Avenue, Isando, Johannesburg, 1600, South Africa

This document is for informational purposes only. Specifications subject to change without notice.

