

House Three-Phase Distribution Box



House Three-Phase Distribution Box



Lex Products offers a full range of portable power distribution units ...



Complete three phase house wiring with proper Wire size, MCB, room & load design Three phase distribution box wiring RCCB - Residual Current Circuit Breaker...more.



Learn about 3 phase house wiring diagrams and how they are used to distribute electrical power to different areas of a home. Find out about the benefits and considerations of using a 3 phase system.



Get free shipping on qualified 3 Phase Breaker Boxes products or Buy Online Pick Up in Store today in the Electrical Department.



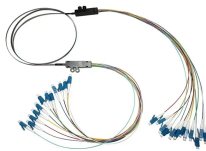
Commercial facilities require more robust distribution boxes capable of handling three-phase power and higher current ratings. These boxes often include specialized breakers for ...



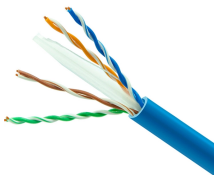
Learn how to select, size, and design a three-phase distribution box for compact electrical systems. Ideal for prefab buildings, laundry facilities, and workshops—covering amperage selection, ...



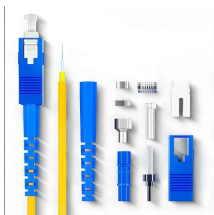
Learn about the wiring process for a 3 phase distribution board (DB) box, including the necessary steps and safety precautions. Understand how to connect the incoming power supply, distribute it to ...



Looking for SOUTHWIRE, Three Phase, Power Distribution Box? Find it at Grainger ®. With over one million products and 24/7 customer service we have supplies and solutions for every industry.



A typical 3 phase distribution board consists of circuit breakers, ground spillage protection units and fuses that are used to distribute power to individual power points or circuits within a building.



Lex Products offers a full range of portable power distribution units including boxes, boards and panels, specifically engineered for indoor and outdoor use.



Many factories and businesses use these boxes to run things like motors, air compressors, and heaters. Big buildings with many floors also need them for ...



Many factories and businesses use these boxes to run things like motors, air compressors, and heaters. Big buildings with many floors also need them for steady power. Some houses that use a lot of power ...

Contact Us

For more information, pricing, or custom energy solutions, please contact us:

Website: <https://gdroofing.co.za>

Email: sales@gdroofing.co.za

Phone: +27 72 418 9365

Address: 22 Electron Avenue, Isando, Johannesburg, 1600, South Africa

This document is for informational purposes only. Specifications subject to change without notice.

