

How long should the fiber optic cable attenuation be measured



Overview

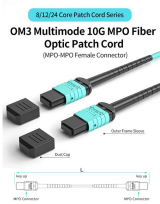
The most accurate way of measuring the fiber attenuation coefficient requires transmitting light of a known wavelength through the fiber and measuring the changes over distance. Corning recommends that all fiber optic systems be tested to a minimum set of standards. So, you drop everything and investigate. He's right - it is not working. It's measured in decibels per kilometer (dB/km), and it determines how far a signal can travel before it becomes too weak to read. The purpose of attenuation testing is to. There are several methods of fiber optic cable testing, each serving a specific purpose in assessing the cable's performance and reliability: Optical Loss Test Sets (OLTS): This method measures the total light loss in a fiber optic link, simulating the network conditions.



How long should the fiber optic cable attenuation be measured



The most accurate way of measuring the fiber attenuation coefficient requires transmitting light of a known wavelength through the fiber and measuring the changes over distance.



Optical Signal Attenuation is the single greatest factor limiting the distance and performance of your network. Understanding it is crucial for anyone involved in data centers, ...



You can easily calculate fiber optic cable attenuation values using our Fiber Optic Attenuation Calculator (#) The real loss of the fiber is determined by a variety of conditions, and the ...



Measurement: Launch a light signal into the fiber optic cable using the light source and measure the received power using the power meter. The measurement is typically done at multiple wavelengths ...



Learn what signal attenuation in fiber optics is, what causes it, how it's measured, and the best ways to reduce loss for optimal network performance.



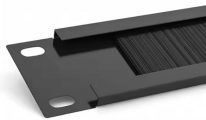
Attenuation in fiber optics is the gradual loss of light signal strength as it travels through a fiber cable. It's measured in decibels per kilometer (dB/km), and it determines how far a signal can ...



3. Tier 1 and Tier 2 Testing c systems. The two tiers of testing are Tier 1 required. This level of testing consists of link attenuation testing, link length, and a polarity check. The fiber optic link attenuation is ...



But, for designers, just starting to work in the fiber-optic design space, measuring attenuation can seem like a monumental task. In this tutorial, we'll take a look at the basics behind ...



Optical Signal Attenuation is the single greatest factor limiting the distance and performance of your network. Understanding it is crucial for anyone ...



This document describes how to calculate the maximum attenuation for an optical fiber. You can apply this methodology to all types of optical fibers in order to estimate the maximum ...



Table 1 summarizes the known attenuation measurement standards for installed optical fiber cabling, their test methods, and most importantly, when they should be used.

Contact Us

For more information, pricing, or custom energy solutions, please contact us:

Website: <https://gdroofing.co.za>

Email: sales@gdroofing.co.za

Phone: +27 72 418 9365

Address: 22 Electron Avenue, Isando, Johannesburg, 1600, South Africa

This document is for informational purposes only. Specifications subject to change without notice.

