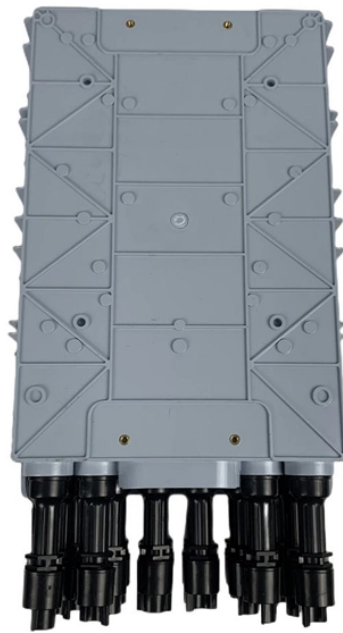


## How many solar panels can be connected to a photovoltaic combiner box



### Overview

A solar combiner box can link 2 to 52 photovoltaic strings. The number depends on how it is made and used. Always look at the manufacturer's guide for input ports and current ratings. A string is a series of solar panels connected in sequence. But with so many technical parameters, how can you be sure you're making the right decision?

In this article, we walk you through a real-world case—144 solar panels of 555W each paired with a solar combiner box. A solar combiner box is a crucial component in solar energy systems, designed to consolidate the outputs of multiple solar panel strings into a single output that connects to an inverter. You need a combiner box when your photovoltaic system has more than three strings, systems with three or fewer strings can connect directly to an inverter. Let's assume we have a system with three of the following panels on a single series string: Canadian Solar CS6P-255P 255W Poly Solar Panel Panel Electrical Characteristics: System Rating (STC): 255 Watts Max Power Voltage (Vmp): 30.2 Volts Max Power

Current (Imp): 8.

## How many solar panels can be connected to a photovoltaic combiner



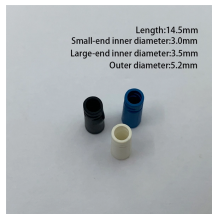
How to size solar combiner box: calculate PV string count, voltage, current, and ...



A solar combiner box typically connects 2 to 48+ photovoltaic strings, depending on its design, input ports, and safety codes for your solar system.



This article will provide a brief introduction to the proper method for sizing battery charge controllers and combiner boxes.



Using the combiner box, you can connect 4 panels into one string. If you put two panels on one string, you either get 25 amps (parallel), or 48v (series). 25 amps exceeds the rating of the ...



How to size solar combiner box: calculate PV string count, voltage, current, and plan for future expansion to ensure safe, efficient operation.



A PV combiner box becomes essential when your system has 3 or more PV strings connected in parallel to the same inverter MPPT input. This rule is grounded in electrical safety ...



Learn how to size a solar combiner box by considering the number of strings, current, and voltage ratings. Proper sizing ensures optimal performance, safety, and reliability for your PV system.



In this article, we walk you through a real-world case—144 solar panels of 555W each paired with a powerful 80kW inverter—and demonstrate exactly how to calculate your system's configuration. ...



If you are deciding between a residential and commercial solar setup, this table can help you compare the most important combiner box differences before you order.



Combiner boxes become necessary when your photovoltaic system includes more than three strings connecting to the inverter. Systems with three or fewer strings can typically connect ...



Solar combiner boxes are essential components in solar photovoltaic (PV) systems, designed to consolidate the outputs of multiple solar panel strings into a single output for connection ...

## Contact Us

For more information, pricing, or custom energy solutions, please contact us:

Website: <https://gdroofing.co.za>

Email: [sales@gdroofing.co.za](mailto:sales@gdroofing.co.za)

Phone: +27 72 418 9365

Address: 22 Electron Avenue, Isando, Johannesburg, 1600, South Africa

This document is for informational purposes only. Specifications subject to change without notice.

