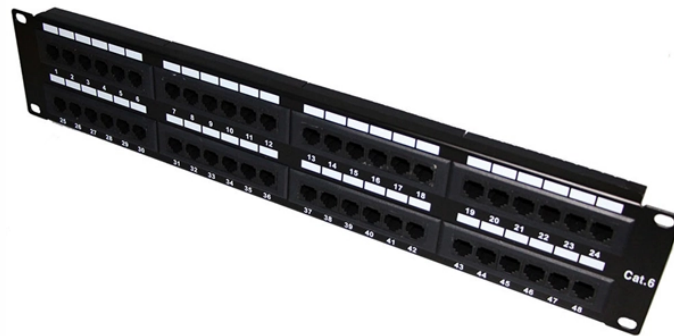


# How thick should the guardrail of the distribution box be



## Overview

All top rails and midrails need to be at least 0. In the diagram below, you can see the side profile of two different types of guardrails: The first option shows a guardrail system with a horizontal midrail and center post. ) from the surface of the walking area. Any vertical intermediate members (EX. The same width maximum goes for any other posts within the guardrail. The standard requires guardrail systems and components to be designed and built to meet the requirements of § 1926. Guardrail systems must withstand 200 pounds of outward. Our guardrails follow all OSHA Guardrail Requirements and make it easy to install guardrails while being compliant.

## How thick should the guardrail of the distribution box be



(2) For pipe railings: posts, top rails, and intermediate railings shall be at least one and one-half inches nominal diameter (schedule 40 pipe) with posts spaced not more than 8 feet (2.4 m) apart on centers.



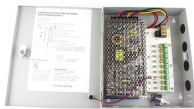
OSHA has specific requirements for construction that include the installation of guardrails at heights of 6 feet or more, and 4 feet or more for general industries. If an employee is reaching 10 ...



(2) For pipe railings: posts, top rails, and intermediate railings shall be at least one and one-half inches nominal diameter (schedule 40 pipe) with posts spaced not more than 8 feet (2.4 m) apart on centers.



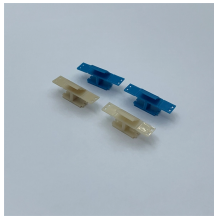
Reference tables for guardrail and handrail design at 42" and 34" heights, comparing round and square steel sections. Includes spacing limits, wall thicknesses, and structural adequacy per IBC 2021 ...



According to OSHA, top rails (or equivalent guardrail system members) must be 42 inches (107 cm), plus or minus 3 inches (8 cm), above the walking-working surface.



OSHA regulations permit midrails, screens, meshes and vertical members in guardrail systems. These members must be able to hold at least 150 pounds of outward and downward pressure, and ...



Under OSHA's requirements, guardrails and handrails must meet specific dimensions and performance standards in both general industry and construction. The top rail and midrails must be at least .25 ...



All top rails and midrails need to be at least 0.25 inches thick. In the diagram below, you can see the side profile of two different types of guardrails: The first option shows a guardrail system with a ...



Top rails and midrails are at least 0.25-inches (0.6 cm) in diameter or in thickness. The height of a guardrail, according to OSHA, should be 42 inches. There is some grace with this height, allowing for ...



Learn OSHA guardrail requirements for construction and general industry — top rail height, midrail specs, load standards, and common violations to avoid.

## Contact Us

For more information, pricing, or custom energy solutions, please contact us:

Website: <https://gdroofing.co.za>

Email: [sales@gdroofing.co.za](mailto:sales@gdroofing.co.za)

Phone: +27 72 418 9365

Address: 22 Electron Avenue, Isando, Johannesburg, 1600, South Africa

This document is for informational purposes only. Specifications subject to change without notice.

