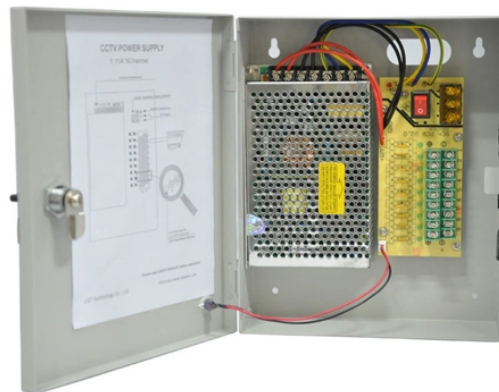


How to Choose Cable Trays for Cable Routing



Overview

Before selecting a cable tray, consider the following key factors: Cable Type and Volume: Determine the number and type of cables to be supported. Environmental Conditions: Assess indoor or outdoor usage, exposure to moisture, chemicals, or extreme temperatures. Cable trays play a crucial role in managing and supporting electrical cables in industrial, commercial, and residential applications. This guide will help you choose the best cable tray. -piece tray is typically used in applications where visual esthetics are important. It is available with a ventilated or solid bottom. Channel tray can protect against. In this guide, I'll walk you through everything you need to know about choosing the right cable trays for your cables. These trays typically consist of a network of horizontal and vertical supports that create a pathway for cables to run through Cable trays come in. Stop Costly Cable Tray Installation Errors Now: Avoiding Mistakes in Instrumentation Cable Tray Installation: A Guide for EPC Projects Cable tray sizing in real EPC projects is not limited to simple area calculation.

How to Choose Cable Trays for Cable Routing



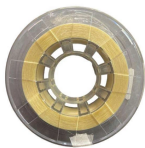
Final Thoughts on Selecting Cable Trays Choosing the right cable tray doesn't have to be complicated. Start by understanding your cable types and quantities, then pick the right material and ...



Use this cable tray sizing calculator to check fill %, select tray size, and comply with IEC 61537 & NEC 392 with formulas, example and checklist.



Learn how to choose the right cable tray for electrical installations. Explore different designs, materials, and fastening methods to ensure optimal protection and cable management.



“A cable tray is a cable tray—why are there so many types?” The answer is simple: different cable characteristics and installation environments demand different tray designs.



Discover cable tray systems, including tray types, sizes, duty ratings and materials, and learn how to choose the right solution for safe cable management.



Cable Tray Technical Guide A practical guide to product selection and installation This guide for engineers and installers has been developed by ABB as a practical reference regarding cable tray ...



In this guide, I'll walk you through everything you need to know about choosing the right cable trays for your cables. Whether you're dealing with power ...



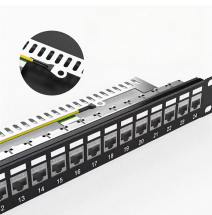
By understanding the types of cable trays available, assessing your project's specific needs, and considering factors like environmental conditions, load capacity, and material selection, ...



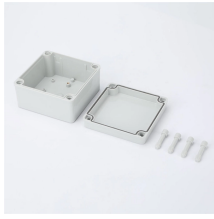
Learn how to select the best cable tray for your project with insights on load capacity, corrosion resistance, customization, and common applications.



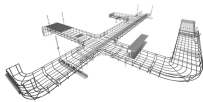
Learn how to choose the best cable tray system for your needs. Explore types, materials, installation tips, and NEC compliance in this expert guide.



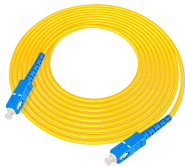
Types of Cable Trays and Sizes Explore various cable tray types and sizes for electrical installations. Learn about ladder, perforated, solid-bottom, wire mesh, and channel trays in this complete guide.



With a variety of types and materials available, it is important to carefully consider the specific needs of your installation and choose the right cable tray for the job.



In this comprehensive guide, we will explore the intricacies of cable trays and provide you with the knowledge needed to select the perfect cable tray system for your specific project



Learn how to choose the best cable tray system for your needs. Explore types, materials, installation tips, and NEC compliance in this expert guide.

Contact Us

For more information, pricing, or custom energy solutions, please contact us:

Website: <https://gdroofing.co.za>

Email: sales@gdroofing.co.za

Phone: +27 72 418 9365

Address: 22 Electron Avenue, Isando, Johannesburg, 1600, South Africa

This document is for informational purposes only. Specifications subject to change without notice.

