

How to assemble a letter-shaped cable tray



Overview

This guide covers the critical steps, from selecting the right electrical cable tray and performing accurate cable fill calculations to managing a safe cable pull through and ensuring all bonding and grounding requirements are met. How about organizing your wiring with a cable tray system?

Smart move. But before you lay the first tray or clamp down a single cable. The Cable Ladder & Tray Components – Assembly Guide presents a comprehensive visual walkthrough of the assembly and installation process for cable ladder and tray systems. The images meticulously detail each component involved, including ladder sections, cross-members, splices, and tray segments. Welcome to our step-by-step guide on installing cable trays! In this video, we'll explore the different types of cable trays available and provide detailed instructions for their installation. To achieve that, calculations of the Total Cable Weight per Meter are done to.

How to assemble a letter-shaped cable tray



Welcome to our step-by-step guide on installing cable trays! In this video, we'll explore the different types of cable trays available and provide ...



Mastering cable tray installation is crucial for creating a safe, organised, and efficient cable management system. By following this step-by-step guide, you can ensure a seamless setup that ...



General Installation Guidelines: latest NEMA standards and local building codes. Trough tray field support and frequency depends on the weight and construction (splice locations, elbow fittings, etc.) ...



Learn how to install cable trays for large-scale projects with our professional, step-by-step guide covering industry standards, safety protocols, ...



The document outlines the procedure for installing cable trays, including essential tools, equipment, and safety measures. It emphasizes the importance of thorough ...



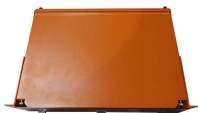
The guide offers a step-by-step demonstration of the proper sequence for assembling these components, providing users with a clear understanding of how to create a secure and organized ...



This guide covers the critical steps, from selecting the right electrical cable tray and performing accurate cable fill calculations to managing a safe cable pull through and ensuring all bonding and grounding ...



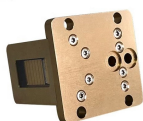
Whether you're building a commercial setup or upgrading an industrial plant, proper cable tray installation ensures neat wiring, safe access, and easy maintenance. But before you lay the first ...



Welcome to our step-by-step guide on installing cable trays! In this video, we'll explore the different types of cable trays available and provide detailed instructions for their...



Learn how to install cable trays for large-scale projects with our professional, step-by-step guide covering industry standards, safety protocols, and efficient routing techniques.



Guide for making bends, tees, crosses, risers and reducers from straight sections of wire basket cable trays live at the project.



The ends of the tray fit into channels at the margins of the NoSplice support, then (supplied) Ground Splice is secured to the support. When utilizing the NoSplice, supports must be placed approximately ...

Contact Us

For more information, pricing, or custom energy solutions, please contact us:

Website: <https://gdroofing.co.za>

Email: sales@gdroofing.co.za

Phone: +27 72 418 9365

Address: 22 Electron Avenue, Isando, Johannesburg, 1600, South Africa

This document is for informational purposes only. Specifications subject to change without notice.

