

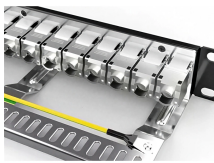
How to coil fiber optic cable inside a junction box



How to coil fiber optic cable inside a junction box



With the help of this video you can easily routing a fibers in your joint box and run your network without any optical fiber power loss.....more



Use only shielded cable. Temperatures at the cable entry can reach 80° C. Selection of cable must be appropriate for the ambient temperature range in which the product is used.



Do not pull pre-connectorized cable through junction boxes, especially elbow's (90-degrees conduit fittings), unless precautions are taken to maintain the long term minimum bend radius.



Proper installation of Fiber Junction Boxes is crucial to ensure the reliability and efficiency of your fiber optic network. This section provides a comprehensive guide for the installation ...



In this blog, we will discuss the two types of fiber optic cables and the role of a simple yet essential piece of equipment in the fiber laying procedure- the, the Fiber Termination Box, or FTB.



Fiber Optic Cable Installation Guidelines This document provides guidelines for the proper installation of fiber optic cable to avoid damage and ensure optimal performance.



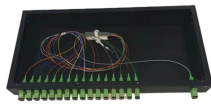
Inside splice closures and at each end, cables with metallic shielding or strength members must be properly grounded and bonded. Care should be taken when arranging fibers and splices in splice ...



Pulls through tightly bent elbow fixtures should be backfed; in other words, the cable is not pulled from end to end, but to and out of an opened junction box, then coiled loosely on the ground and fed ...



Learn how to perform mechanical fiber cable splicing inside fiber enclosures using fiber splice trays. This step-by-step guide covers fiber preparation, alignment, splicing, protection, and ...



Before fiber coiling, the optical cable and pigtail should be pre-processed, and the optical cable and pigtail should be opened first. The key step is to calculate the reserved length...

Contact Us

For more information, pricing, or custom energy solutions, please contact us:

Website: <https://gdroofing.co.za>

Email: sales@gdroofing.co.za

Phone: +27 72 418 9365

Address: 22 Electron Avenue, Isando, Johannesburg, 1600, South Africa

This document is for informational purposes only. Specifications subject to change without notice.

