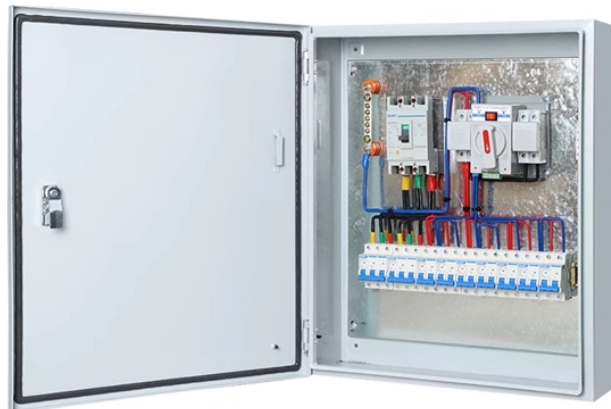


## How to connect a 10kV small busbar



## How to connect a 10kV small busbar



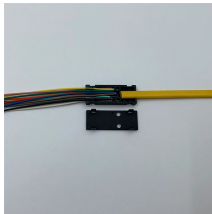
The two physical busbar systems are combined electrically into a single busbar system. The current carrying capacity of the busbar in this application is up to 5000 A under standard conditions.



Your ultimate guide to busbar processing and installation is here. From beginner to expert, we cover everything you need to know in this mechanical field.



Learn about the different methods of connecting bus bars and how they are used in electrical systems. Get insights into the importance of proper bus ...



These pre-configured conductive strips or bars can be connected to create systems of varying length based on the amount of power the control panel requires. Busbar power distribution removes both ...



The use of busbar systems with their versatile rail-adaptable connection, switching and installation devices is an ideal and cost-effective electrotechnical enhancement of modern distribution boards ...



In this comprehensive guide, we'll walk you through the process of installing bus bars in electrical panels, covering safety precautions, tools required, installation steps, and best practices. Before ...



Learn how to design efficient substation busbar systems with calculations, examples, and best practices.



The object for this guide is to provide an easily understood document, aiding interpretation of the requirements to which Busbar Trunking Systems are designed and how they should be safely ...



How to fit a miniature circuit breaker (MCB) to a busbar in a consumer unit (fuse box).



This process, called "jointing," may be needed to create a longer busbar from shorter, more manageable pieces; or to create a T-shaped tap-off connection from the main busbar.



Connection: Connect the busbar to the power source and other components, following proper wiring practices. Ensure all connections are tight and secure to prevent electrical faults.



This is an improvised version of sectionalized bus bar system. As shown in the diagram, sectionalized bus bar ends are connected with another bus bar, with bus couplers to form a closed loop.

## Contact Us

For more information, pricing, or custom energy solutions, please contact us:

Website: <https://gdroofing.co.za>

Email: [sales@gdroofing.co.za](mailto:sales@gdroofing.co.za)

Phone: +27 72 418 9365

Address: 22 Electron Avenue, Isando, Johannesburg, 1600, South Africa

This document is for informational purposes only. Specifications subject to change without notice.

