

# How to connect a fiber optic router to a gateway



## Overview

This guide details the necessary physical and digital steps to connect your fiber line and activate your internet service. The fiber optic cable does not plug directly into a standard home router because the signal type must be translated. Fiber optic internet is generally installed in the following 5 steps, which we'll dive deeper into throughout the article: A technician checks your area and prepares the connection from the neighborhood fiber network. Choose your cable type to get setup details for your BGW320. Your BGW320 connects to a fiber jack using a white cable with green tips. Get started with the AT&T Smart Home Manager app. Download the app or scan the QR code on the side of. Connecting a fiber optic cable directly to your router is usually not how a fiber internet connection works; instead, the fiber connects to an ONT (Optical Network Terminal), which then connects to your router via Ethernet.

## How to connect a fiber optic router to a gateway



Many newer apartment and condo buildings are pre-wired for fiber, meaning the infrastructure is already run to each unit and activation simply requires connecting a gateway to an ...



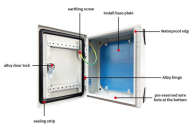
Many newer apartment and condo buildings are pre-wired for fiber, ...



In this comprehensive guide, we will walk you through the steps to effectively use your own router with AT& T Fiber service.



However, setting up a fiber optic connection to your router can seem daunting if you're unfamiliar with the process. In this guide, we'll walk you through how to connect a fiber...



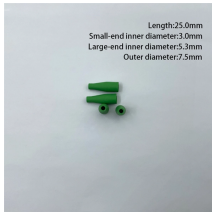
This article clarifies the typical setup and explains how to get your router connected to a fiber optic internet service via the appropriate intermediary devices.



Explore how fiber optic internet is installed in your home, with step-by-step details on cables, ONTs, routers, and what to expect during the appointment.



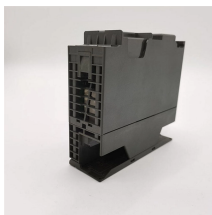
Set up your BGW320 Connect, surf, and stream with your new BGW320 All-Fi Hub. Choose your cable type to get setup details for your BGW320.



To access your router's settings and connect it to your AT& T fiber optic modem, follow these steps:  
- Step 1: Open a web browser on your computer or mobile device.



Learn the essential hardware bridge and sequential steps needed to link the optical line to your router.



That's it — five easy steps to installing fiber-optic internet at your home. Of course, your internet service provider (ISP) helps, making things even easier.



Learn how to set up your AT& T Internet and AT& T Fiber equipment with this easy-to-use guide. From cables to customization, you'll find it all!

## Contact Us

For more information, pricing, or custom energy solutions, please contact us:

Website: <https://gdroofing.co.za>

Email: [sales@gdroofing.co.za](mailto:sales@gdroofing.co.za)

Phone: +27 72 418 9365

Address: 22 Electron Avenue, Isando, Johannesburg, 1600, South Africa

This document is for informational purposes only. Specifications subject to change without notice.

