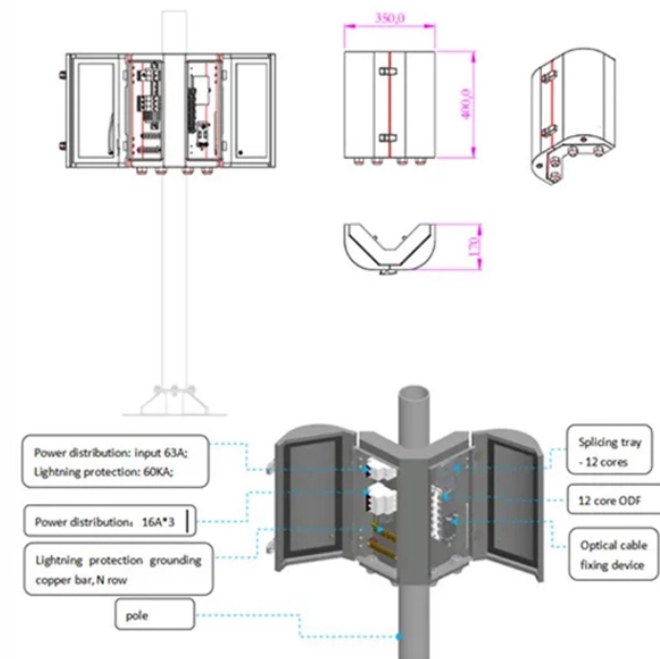


# How to determine how many households a light distribution box connects to



## Overview

In this video I'm showing you how many electrical Distribution box need in an house, how to calculate it's size or space and where to install and more about house wiring. These boxes work by stepping down the voltage of electricity received from the mains power supply in the street. They are typically used in. A modern residential overhead service entrance comprises three cables — two hot and one neutral — that run from the utility lines to a point of attachment at the weather head, and then down an entrance cable or conduit to the meter socket. Wires. While some of the items mentioned here are long standing NFPA 70, National Electrical Code® (NEC®) codes and processes, there are a couple changes within the 2020 NEC that will modify how residential electrical services will be installed moving forward. Calculate service entrance sizing, panel loads, demand factors, and ensure NEC Article 220 compliance.

## How to determine how many households a light distribution box can



To maintain safety, it is important to leave a 10-foot clearance around pad-mount transformer boxes, as they are grounded and safe. There is a good chance your lot will have a green ...



A typical distribution transformer can be several 100 kVA - giving you an idea of how many houses would be connected.



To maintain safety, it is important to leave a 10-foot clearance around pad-mount transformer boxes, as they are grounded and safe. There is a good ...



When designing or upgrading a residential distribution board, it's crucial to accurately calculate the total electrical load. This ensures the board can safely handle the combined load of all ...



Professional home circuit calculator per NEC Article 210 and 220. Determines the total number of branch circuits, wire sizes, breaker ratings, and GFCI/AFCI protection requirements for residential electrical ...



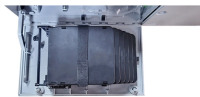
In this section of the JLC Field Guide, we address what is often called the load center or just the electrical panel, including the service entrance that feeds into, and any subpanels that might ...



In this video I'm showing you how many electrical Distribution box need in an house, how to calculate it's size or space and where to install and more about house wiring.



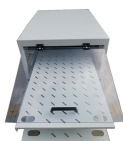
Every home is connected to the electrical grid through some sort of fuse box or circuit breaker as shown in figure 1. The overhead power connection from the utility lines to the service entrance is referred to ...



While there is not enough time to elaborate on a full electrical service calculation here, subscribers of NFPA LiNK™ can access a full single-family residential service calculation within ...



Connecting DERs for Backup Power and Resilience as solar with battery energy storage to power their home during grid outages. This generally requires hysically disconnecting from the ...



A typical distribution transformer can be several 100 kVA - giving you an idea of how many houses would be connected.



Free electrical load calculation tool for residential & commercial buildings. Calculate service entrance sizing, panel loads & demand factors per NEC 220.

## Contact Us

For more information, pricing, or custom energy solutions, please contact us:

Website: <https://gdroofing.co.za>

Email: [sales@gdroofing.co.za](mailto:sales@gdroofing.co.za)

Phone: +27 72 418 9365

Address: 22 Electron Avenue, Isando, Johannesburg, 1600, South Africa

This document is for informational purposes only. Specifications subject to change without notice.

