

How to identify the model number of a Huawei optical module



Overview

Run the display transceiver diagnosis interface [interface-type interface-number] command to view diagnostic information about a specified optical module. Figure 1 Schematic Diagram of Optical Module Connected to Switch 1. Optical Module Status Check Run the. Taking the Huawei 5700 series switches as an example, the commands to view optical module information are as follows: Transceiver Type :1000_BASE_SX_SFP Connector Type :LC Wavelength(nm) :850 Transfer Distance(m) :300(50um),150(62. Next, we will introduce the query instructions of relevant parameters of optical module, and view the DDM information of interface optical modules through display command.

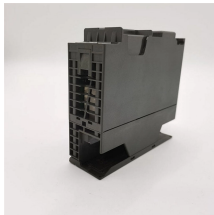
How to identify the model number of a Huawei optical module



Today, ETU-LINK will introduce how to query the information of optical module on Huawei switch. Next, we will introduce the query instructions of relevant parameters of optical ...



How Can I Determine Whether an Optical Module Is a Huawei-Certified Optical Module? A switch must use optical or copper modules that have been certified for use on Huawei switches.



Optical modules are widely used in switches, network interface cards (NICs), routers, and other communication devices. During use, reading optical module information helps understand its real ...



See the interface module via the optical display command information, including general information of the optical module, manufacturing information, and alarm information. Steps Run the display ...



To confirm whether optical modules you use have been certified by Huawei, contact technical support personnel. If the optical modules you use are delivered after July 1, 2013, use either of the following ...



This document describes hardware components of the S9700, including the cabinet, chassis, power supply facilities, fan modules, cards, cables, and pluggable modules for interfaces. You can find ...



Taking the Huawei 5700 series switches as an example, the commands to view optical module information are as follows:



The SFP-FE-SX-MM1310 (part number: 02315233) is a Huawei-certified 100M optical module. However, the Vendor Name field displays the original manufacturer name, instead of HUAWEI.



To determine whether optical modules delivered for Huawei S switches before July 1, 2013 are certified ones, contact Huawei technical support. If your optical modules are delivered after July ...



Today, ETU-LINK will introduce how to query the information of optical module on Huawei switch. Next, we will introduce the query instructions of ...

Contact Us

For more information, pricing, or custom energy solutions, please contact us:

Website: <https://gdroofing.co.za>

Email: sales@gdroofing.co.za

Phone: +27 72 418 9365

Address: 22 Electron Avenue, Isando, Johannesburg, 1600, South Africa

This document is for informational purposes only. Specifications subject to change without notice.

