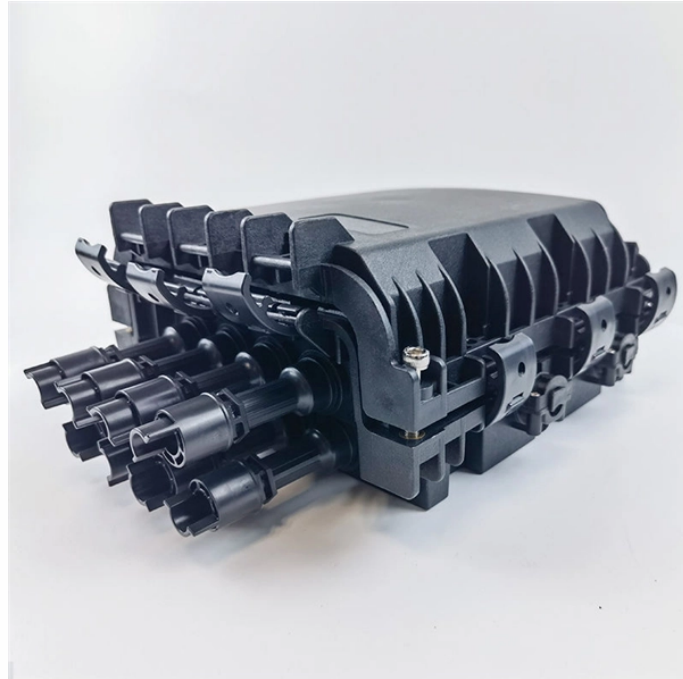


How to identify the switch in the distribution box



Overview

The main switch, or main breaker, controls the entire electrical supply to the distribution box. It's typically rated for the maximum current capacity of the electrical. Check electrical parameters: First understand the basic electrical parameters of Distribution box so that you can have a general understanding of the capacity and performance of the distribution box. Analyze the incoming line part: Determine the incoming line source of the distribution box and. When planning the electrical system of a home or building, it's essential to understand how to organize and wire the distribution board. Each section must be carefully labeled to avoid confusion and ensure proper function during maintenance or upgrades. Luckily. A distribution box, also known as a distribution board, electrical panel, or breaker box, is an enclosure that houses electrical components responsible for distributing electricity throughout a building. A distribution board or distribution box is where the main power supply is distributed to multiple loads.

How to identify the switch in the distribution box



Understanding the key components of a distribution box helps you make informed decisions about installation and maintenance. Each element plays a specific role in ensuring safe ...



- TELECOM CABINET
- BRAND NEW ORIGINAL
- HIGH-EFFICIENCY

You might feel a little nervous about opening your distribution box, but you can do it safely if you follow some simple steps. Let's walk through what you need to know before you start.



Learn about the GE breaker box diagram and how it helps with understanding the electrical circuit connections and panel configuration in your home.



That big gray box in your utility room may seem like a mystery, but with a little know-how, you can learn how to read and operate it. Your breaker panel controls the electrical distribution ...



If the switch detects a ground fault, it will automatically trip, shutting off power to the circuit. These switches are easily recognizable by their test and reset buttons.



A clear and detailed schematic can help you identify the connections, switches, and protection devices needed to manage electrical flow efficiently. The primary components of the panel include the main ...



Home inspectors may often find the panelboard door with illegible markings that fail to identify the circuits specifically and accurately. Each circuit must be detailed ...



Learn how to read and understand a load center wiring diagram, including the different components and connections involved. Find step-by-step instructions ...



Learn how to read and understand a load center wiring diagram, including the different components and connections involved. Find step-by-step instructions and diagrams to help you navigate your load ...



Understanding the key components of a distribution box helps you make informed decisions about installation and maintenance. Each element plays a specific role in ensuring safe ...



If the switch detects a ground fault, it will automatically trip, shutting ...



Identify the dual power switch (if any): Understand the working principle and switching conditions of the dual power switch to ensure that it can automatically switch to the backup power ...



Here, a double pole MCB is used as the Main MCB or Main switch. It has the highest capacity than other MCBs used in the DB. Generally, 63A MCB is used as the main switch in most of ...



Home inspectors may often find the panelboard door with illegible markings that fail to identify the circuits specifically and accurately. Each circuit must be detailed enough to distinguish it from all ...

Contact Us

For more information, pricing, or custom energy solutions, please contact us:

Website: <https://gdroofing.co.za>

Email: sales@gdroofing.co.za

Phone: +27 72 418 9365

Address: 22 Electron Avenue, Isando, Johannesburg, 1600, South Africa

This document is for informational purposes only. Specifications subject to change without notice.

