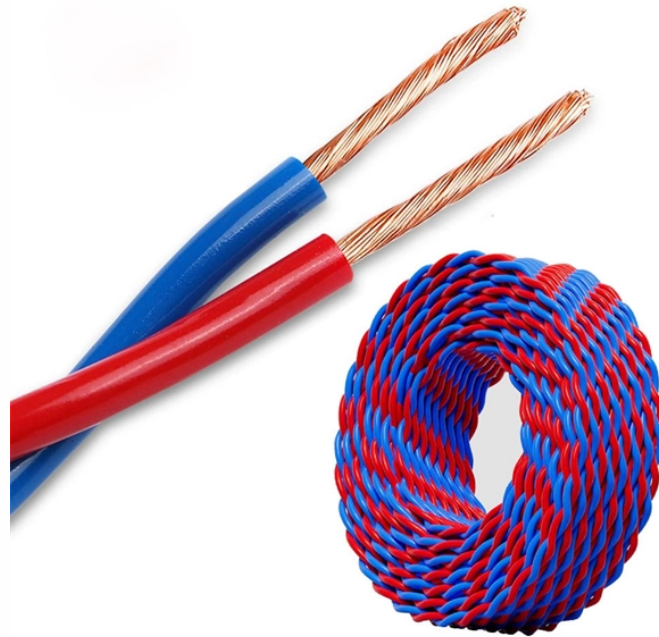


How to install a Dominic distribution box



How to install a Dominic distribution box



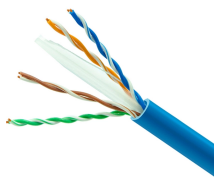
Complete guide for your Dometic Air Distribution Box. Get installation help, troubleshooting tips, and find genuine replacement parts for RV air conditioners.



Route the 115 VAC power supply wire, with ground, from the time-delay fuse or circuit breaker box to the roof opening. Use a listed/certified non-metallic sheathed single strand cable.



Distribution Box Installation: Advanced Techniques. The installation of a distribution box is explored in detail, highlighting advanced techniques for achieving a professional and...



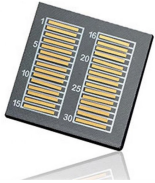
Before starting the installation, finding a proper place for putting the distribution box is crucial, because it largely decides the safety and convenience of maintenance. Let's see what factors ...



DIY guide to installing, configuring, and maintaining the Dometic Penguin II Air Distribution Box for reliable RV cooling.



Complete guide for your Dometic Air Distribution Box. Get installation help, troubleshooting tips, and find genuine replacement parts for RV air ...



Now, this Air Distribution Box is going to work with your Dometic FreshJet, Brisk II, High Performance and Blizzard NXT units, of course, those units are sold separately from this, to cool the interior of ...



Install junction box cover on all systems except CCC 2 electronic control box. Push the wires into the junction box and install junction box cover using screw(s) provided.



This air conditioner (hereinafter referred to as “unit” or “product”) is designed and intended for installation on the roof of a Recreational Vehicle (hereinafter referred to as RV) during or after the time it is ...



I've finished reading the Dometic Air Distribution Box Kits Installation & Operating Instructions for models 3310700, 3310741, and 3310742. This manual covers installation, operation, safety precautions, and ...



This comprehensive guide addresses everything you need to know about the Dometic Air Distribution Box: from understanding global market dynamics and selecting the right model, to ...



For one unit installation: The unit should be mounted slightly forward of center (front to back) and centered from side to side. For two unit installations: Install one unit 1/3 and one unit 2/3" from front ...

Contact Us

For more information, pricing, or custom energy solutions, please contact us:

Website: <https://gdroofing.co.za>

Email: sales@gdroofing.co.za

Phone: +27 72 418 9365

Address: 22 Electron Avenue, Isando, Johannesburg, 1600, South Africa

This document is for informational purposes only. Specifications subject to change without notice.

