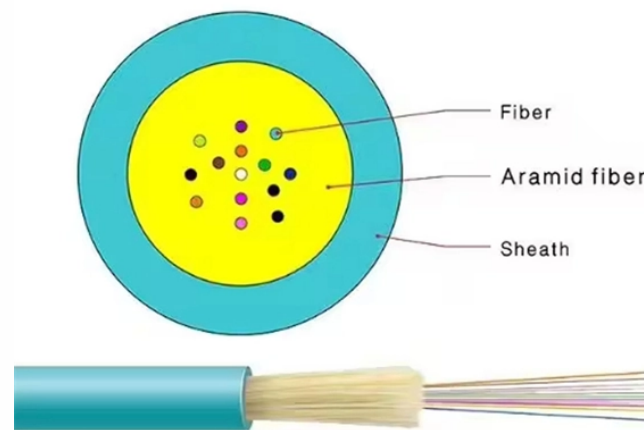


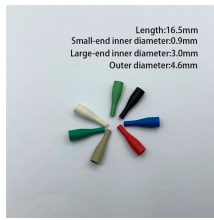
How to install a cover for a municipal electrical distribution box



Overview

Design, build, and safely install custom electrical box covers. Essential guide to materials, code, and secure mounting. A junction box cover plate is a finishing barrier secured over an electrical junction box, which houses the splices and connections of electrical wiring. The primary function of this plate is safety, acting as a shield to prevent accidental contact with energized wires and to contain potential. A distribution box is the heart of any electrical system. Article 314-29 of the National Electrical Code states that listed junction boxes may be buried without.

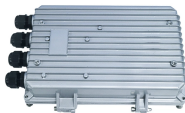
How to install a cover for a municipal electrical distribution box



To prevent moisture from entering box, use silicone sealant around threads of plugs and any other openings.



The cover must be completely exposed and the boxes must be completely accessible. See Article 314 for all code details before installing. Electrical Junction Boxes should never be installed in heavily ...



Learn how to install a distribution box safely and correctly. Covers wiring, placement, standards, and expert tips for a compliant setup.



This article provides a detailed overview of the entire process of installing a distribution box, from pre-installation preparation to post-installation maintenance, and summarizes common ...



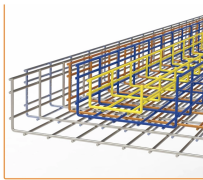
In this step-by-step tutorial, we'll cover: Tools you need...more. Learn how to properly install an electrical box safely and efficiently.



Design, build, and safely install custom electrical box covers. Essential guide to materials, code, and secure mounting.



Master junction box cover plate selection, precise sizing for proper fit, and the crucial safety steps required for flawless installation.



If you have an eyesore of an electrical box that you're tired of looking at, just know there are a few simple and budget-friendly ways to cover it up.



First of all, you need to have a simple understanding of the definition of a distribution box, and make it clear which kind of distribution box you want to install. This is important to properly install it.



First of all, you need to have a simple understanding of the definition of a distribution box, and make it clear which kind of distribution box you want to ...



One of the most popular ways to hide an electrical box is to install a decorative panel over it. These panels come in a wide variety of colors, materials, and styles, so you can find one that matches your ...

Contact Us

For more information, pricing, or custom energy solutions, please contact us:

Website: <https://gdroofing.co.za>

Email: sales@gdroofing.co.za

Phone: +27 72 418 9365

Address: 22 Electron Avenue, Isando, Johannesburg, 1600, South Africa

This document is for informational purposes only. Specifications subject to change without notice.

