

# How to install explosion-proof and corrosion-resistant distribution boxes



## Overview

The wire inlet and outlet of explosion-proof distribution box should be set at the bottom of the box, not at the top, side, back or door of the box; The incoming line and outgoing line shall be sheathed and bundled, and waterproof bending shall be made; The conductor bundle shall. The wire inlet and outlet of explosion-proof distribution box should be set at the bottom of the box, not at the top, side, back or door of the box; The incoming line and outgoing line shall be sheathed and bundled, and waterproof bending shall be made; The conductor bundle shall. When installing, please follow the instructions strictly and ensure installation by a professional. Open the terminal chamber cover, connect the cables through the cable gland to the terminals, ensuring both the internal and external ground wires are correctly connected. After confirming there. Explosion-proof electrical equipment, such as explosion-proof distribution boxes, is specifically designed for hazardous environments where flammable gases, vapors, or dust may be present. Always ask: "Does this need to be here?"

" before installing. What Is an Explosion Proof Junction Box?

An explosion proof junction box is a sealed. Any installation of devices within a hazardous area as defined in the NEC® or ATEX Directive MUST BE in accordance with that device's CONTROL DRAWING and local ordinances. Since conditions of use of the product are outside of the care, custody and control of Larson Electronics, the purchaser should determine the suitability of the product for his intended use, and a read and be familiar with the.

## How to install explosion-proof and corrosion-resistant distribution b



To meet diverse installation requirements, a variety of enclosure dimensions, terminals, and cable gland options are available. The modular design allows for tailored configurations that align with specific ...



If installing in a Class I, II Division 2 or Zone 1 for USA or Canada, R. STAHL has the right solution for you. Choose from below or contact us to discuss your specific application.



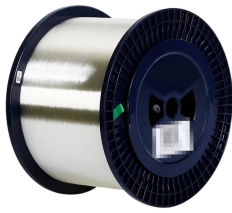
All circuit wiring is run in conduit and junction boxes approved for explosion-proof installation. Explosion proof transducers and wiring must be installed according to ANSI/UL 1203-1994, Explosion-Proof ...



The explosion-proof power distribution box and the explosion-proof lighting distribution box should be set separately. If they are combined in the same distribution box, the power and ...



Proper installation, wiring, and usage are critical to ensuring the safety and functionality of these systems. Below, we will discuss the correct wiring methods ...



Proper installation, wiring, and usage are critical to ensuring the safety and functionality of these systems. Below, we will discuss the correct wiring methods for an explosion-proof...



Learn about explosion proof junction boxes—pricing, sizes, certifications, and installation tips for electricians and engineers. Shop certified junction boxes today.



Learn about explosion proof junction boxes—pricing, sizes, certifications, and installation tips for electricians and engineers. Shop certified ...



**DIRECTIONS FOR INSTALLATION WARNING:**  
Electrical power supply **MUST BE OFF** Before and during installation and maintenance.



It's not just about compliance - it's about creating intrinsically safe systems where cable management and enclosure installation don't just meet standards but exceed them in design ...



When installing, please follow the instructions strictly and ensure installation by a professional. 1. Open the terminal chamber cover, connect the cables...



Understanding explosion proof wiring box solutions is essential for industries that prioritize safety and reliability. This guide will explore the latest developments and related industries focused ...

## Contact Us

For more information, pricing, or custom energy solutions, please contact us:

Website: <https://gdroofing.co.za>

Email: [sales@gdroofing.co.za](mailto:sales@gdroofing.co.za)

Phone: +27 72 418 9365

Address: 22 Electron Avenue, Isando, Johannesburg, 1600, South Africa

This document is for informational purposes only. Specifications subject to change without notice.

