

How to make cuts for cable trays



Overview

This short shows key steps: cutting sheet metal to size, punching or slotting for wire access, bending edges to form the tray shape, welding joints for strength, and smoothing edges for safety. more. In the Oglaend System Cutting Guideline you can easily find out what the optimal cutting lengths/intervals are for all modular products. Following the advice given. Cable trays are structural systems designed to support insulated electrical cables used for power distribution, control, and communication. You have used your protractor and worked out you need to make a 22° angle in a 600mm cable tray. Can anyone explain the formula needed to make the perfect gusset?

IF YOUR POST FITS INTO THIS.

How to make cuts for cable trays



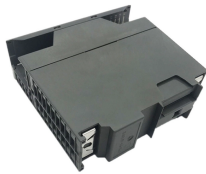
USING A POWER CUTTER TO CUT CABLOFIL CABLE TRAY il from Cablofil makes cutting wire cable tray easy. This lightweight power tool features a 33° swivel cutting head to make cuts from any angle.

...

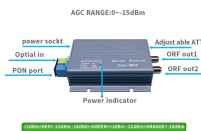


The document provides instructions for forming various bends and joints in electrical trunking and cable trays. It describes: 1) How to mark and cut a right-angle internal bend in a section of trunking,

...



An offset allows the tray to safely "step" over, under, or around these barriers before seamlessly continuing on its original path. How to Calculate Cable Tray Offset & Cut Marks? Calculating an ...



i am trying to learn how to accurately measure and cut cable tray and trunking to be able to fabricate my own angles. both of these items come in 3 ...



This short shows key steps: cutting sheet metal to size, punching or slotting for wire access, bending edges to form the tray shape, welding joints for strength, and smoothing edges for safety.



The example to the right shows the cutting pattern that would be used to create a 30 Degree Bend on 12" Wide Wire Cable Tray. To make a tighter radius, only leave one row in between ...



i am trying to learn how to accurately measure and cut cable tray and trunking to be able to fabricate my own angles. both of these items come in 3 metre lengths and can be cut with a hacksaw.



In the Oglænd System Cutting Guideline you can easily find out what the optimal cutting lengths/intervals are for all modular products. As well as, learn about what's important to consider ...



For cutting, have a saw handy, and a drill will help you fasten everything together. Lastly, consider cable ties or clips to keep your cables organized once the tray's installed. With these ...



A cable tray will protect electrical cable and provide a safe pathway for electrical wires that is functional and maintainable. This guide will discuss the process of cable tray fabrication and installation, and ...



Depends on the type of cable tray, you can buy 90° tray fittings or use a speed square with a straight edge and a grinder or skill saw to cut 45° cuts. Do you want a hard 90 or 2 spaced out ...



The document provides instructions for forming various bends and joints in electrical trunking and cable trays. It describes: 1) How to mark and cut a right-angle ...

Contact Us

For more information, pricing, or custom energy solutions, please contact us:

Website: <https://gdroofing.co.za>

Email: sales@gdroofing.co.za

Phone: +27 72 418 9365

Address: 22 Electron Avenue, Isando, Johannesburg, 1600, South Africa

This document is for informational purposes only. Specifications subject to change without notice.

