

How to tell if a fiber distribution box is full



Overview

Before you call for expensive technician support, run through these 5 simple visual and physical checks yourself! This step-by-step guide is designed for homeowners, office managers, or IT enthusiasts to verify the basic installation quality of their fiber termination point. Problems within a fiber link can occur due to a wide variety of reasons. A very common problem is that a connector is not fully engaged - often hard to notice in a crowded patch panel. Or it could be caused by the quality of the connector itself, such as poor end-face geometry that doesn't pass the. When issues like signal loss, slow speeds, or intermittent connectivity arise, systematic troubleshooting is key. This guide will walk you through diagnosing and resolving common fiber network issues efficiently. Firstly, capacity and compatibility are essential factors to evaluate. In this article, we will delve into the world of fiber optic distribution boxes - what they are, their importance, types, installation process, advantages, common challenges, maintenance practices, and future.

How to tell if a fiber distribution box is full



In this article, we will delve into the world of fiber optic distribution boxes - what they are, their importance, types, installation process, advantages, common challenges, maintenance ...



By comparing the loss of the link to the requirements of the technology, you can determine whether or not the fiber link is the source of a problem. They can also be used to verify, output power from a ...



This step-by-step guide is designed for homeowners, office managers, or IT enthusiasts to verify the basic installation quality of their fiber termination point.



Leveling - Use a bubble level tool to ensure the FDB is mounted level and square before fully tightening bands or anchor bolts. Stability Check - Verify entire assembly is stable once secured ...



Learn how to troubleshoot fiber networks. Identify common issues like high loss, dirty connectors, and signal drops, with practical solutions for optical links.



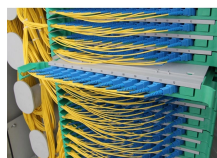
By checking for placement, sealing, fiber management, and testing, can easily tell whether your internet distribution box installation well.



In this blog, we will discuss the two types of fiber optic cables and the role of a simple yet essential piece of equipment in the fiber laying procedure- the, the Fiber Termination Box, or FTB.



By following these guidelines, you'll be able to successfully install, maintain, and troubleshoot fiber distribution boxes across a wide range of applications, ensuring reliable fiber optic ...



By understanding the types, installation steps, and maintenance practices, beginners can embark on the journey of building and sustaining reliable fiber optic networks with confidence.



Maintaining a fiber distribution box involves regular upkeep and thorough inspection to ensure optimal performance. Start by cleaning the box and checking for any signs of wear or ...

Contact Us

For more information, pricing, or custom energy solutions, please contact us:

Website: <https://gdroofing.co.za>

Email: sales@gdroofing.co.za

Phone: +27 72 418 9365

Address: 22 Electron Avenue, Isando, Johannesburg, 1600, South Africa

This document is for informational purposes only. Specifications subject to change without notice.

