

## How to use the optical port of a fiber optic switch



### Overview

In this video, I'll break down 3 easy and practical ways to use fiber ports for high-speed connections: □ Method 1: SFP Copper Transceivers (RJ45 Media Converters) □ Method 2: Optical Modules + Fiber Patch Cables (LC-LC, Multimode/Singlemode) □ Method 3: Plug-and-Play. In this video, I'll break down 3 easy and practical ways to use fiber ports for high-speed connections: □ Method 1: SFP Copper Transceivers (RJ45 Media Converters) □ Method 2: Optical Modules + Fiber Patch Cables (LC-LC, Multimode/Singlemode) □ Method 3: Plug-and-Play. Small Form-factor Pluggable modules (SFP module) are the workhorses of modern network connectivity, enabling flexible fiber optic or copper links between switches, routers, firewalls, and servers. Whether you're upgrading bandwidth, replacing a faulty unit, or reconfiguring your topology, knowing. Not sure how to use those SFP, SFP+, or QSFP fiber ports on your network switch?

You're not alone! In this video, I'll break down 3 easy and practical ways to use fiber ports for high-speed connections. The process requires understanding the type of fiber optic port on your switch and selecting the

appropriate transceiver module. To disconnect a fiber-optic cable from an optical transceiver installed in the device: Do not look directly into a fiber-optic transceiver or into the ends of fiber-optic cables. Fiber-optic transceivers. Fiber optic cabling is increasingly used to connect network switches and other datacom equipment, especially in long-distance and mission-critical applications. Fiber provides: Increased internet signal bandwidth. Optical SFPs contain Class.

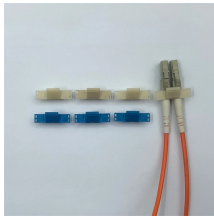
## How to use the optical port of a fiber optic switch



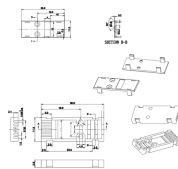
Holding the SFP module by its sides, insert the SFP module into the port on the switch. Slide the SFP module into the port until you hear it click. If the SFP module has a handle, push up on the handle to ...



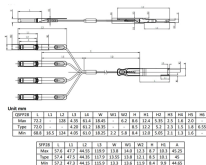
Install optical modules safely with ESD protection, proper handling, and dust control. Follow these steps to avoid damage and ensure network reliability.



Fiber-optic transceivers and fiber-optic cables connected to transceivers emit laser light that can damage your eyes. Do not leave a fiber-optic transceiver uncovered except when inserting or ...



The objective is to run 1 or 2 additional optic fibre from the main switch down to the shed in the back of my garden and down to the garage as well. Here's a quick sketch to present the layout ...



In this video, I'll break down 3 easy and practical ways to use fiber ports for high-speed connections: Method 1: SFP Copper Transceivers (RJ45 Media Converters) Method 2: Optical Modules...



Insert transceivers (like SFP, SFP+, QSFP) into the fiber optic ports of your networking equipment (e.g., switch, router, media converter). Align the transceiver correctly with the port, ...



Align the module with the device's SFP port, ensuring TX/RX labels match the cable's direction. Gently push the module until it clicks into place (a latch will secure it).



Connecting a fiber optic switch involves several steps, ensuring compatibility between the switch's ports and the fiber optic cable. The process requires understanding the type of fiber optic ...



Next, adjust the fiber optic in the SFP port and ensure the SFP module is compatible with the network. Finally, configure the settings for speed, duplex mode, and other parameters based on ...



Next, adjust the fiber optic in the SFP port and ensure the SFP module is compatible with the network. Finally, configure the settings for speed, duplex ...



Always integrate duplex (two strand) fiber optic cabling or higher strand counts. Most modern SFP transceiver modules feature duplex LC connections. Terminate your fiber optic cabling with two LC ...

## Contact Us

For more information, pricing, or custom energy solutions, please contact us:

Website: <https://gdroofing.co.za>

Email: [sales@gdroofing.co.za](mailto:sales@gdroofing.co.za)

Phone: +27 72 418 9365

Address: 22 Electron Avenue, Isando, Johannesburg, 1600, South Africa

This document is for informational purposes only. Specifications subject to change without notice.

