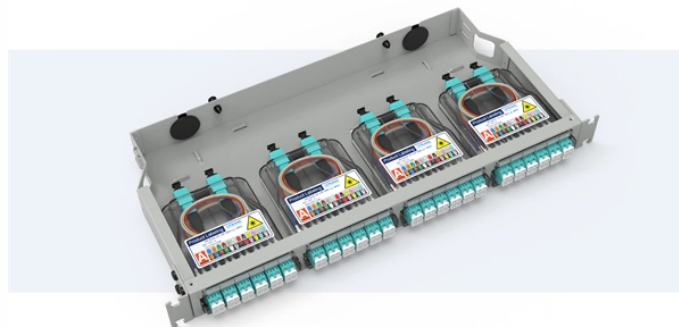


How to wire an explosion-proof distribution box with a plug

Pre-Terminated Patch Panel

- Multi-application support
- Flexible configuration
- Modular design



Cable Gland Plug
28mm Cable Gland Plug



MPO-LC up to 96 cores
MPO direct connection 48 ports



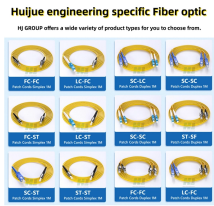
Mounting Bracket
Semi-open mounting holes

Overview

The wire inlet and outlet of explosion-proof distribution box should be set at the bottom of the box, not at the top, side, back or door of the box; The incoming line and outgoing line shall be sheathed and bundled, and waterproof bending shall be made; The conductor bundle. The wire inlet and outlet of explosion-proof distribution box should be set at the bottom of the box, not at the top, side, back or door of the box; The incoming line and outgoing line shall be sheathed and bundled, and waterproof bending shall be made; The conductor bundle. Below, we will discuss the correct wiring methods for an explosion-proof distribution box and highlight key usage precautions. Wiring an Explosion-Proof Distribution Box When installing and wiring an explosion-proof distribution box, it is essential to follow strict safety protocols and national. Explosion-proof distribution boxes, vital terminal distribution equipment in power systems, play a crucial role in controlling and protecting industrial electricity in hazardous environments. Given their ubiquity, let's delve into the installation and wiring of indoor distribution boxes today. e: Use minimum #12 copper or copper clad build t four mounting screws and remove receptacle from box. Pull in power source wiring to the

box, making sure wire leads extend out of box far enough for proper connections 1/2". Connect power leads to receptacle ter of lubricant (supplied with. Choosing cables isn't just about voltage ratings - it's about creating passive firebreaks: ⚠ Critical Mistake : Using regular building-grade cables in explosion areas because "they look similar" to certified versions is like using duct tape for electrical repairs - it might look okay but will fail. Internal Arrangement: Electrical components and wiring within the box must be neatly organized, clearly labeled, and aesthetically arranged for ease of maintenance. Today, the team at Explosion-proof Electrical Equipment Network shares the following guidelines: 1. 5 to 10 kilowatts, suitable for using 220-volt fans and.

How to wire an explosion-proof distribution box with a plug



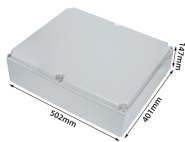
Explosion-proof distribution boxes, vital terminal distribution equipment in power systems, play a crucial role in controlling and protecting industrial electricity in hazardous environments.



Proper installation, wiring, and usage are critical to ensuring the safety and functionality of these systems. Below, we will discuss the correct wiring methods ...



Second, the wiring considerations: Explosion-proof distribution box is a total circuit distribution box for all users. The distribution box is a mass parameter on the data.



Customers often inquire about the internal wiring of explosion-proof distribution boxes. Today, the team at Explosion-proof Electrical Equipment Network shares the following guidelines:



Today, we share a series of standard wiring procedures and precautions, with a focus on residential explosion-proof distribution boxes and their circuit configurations:



Wire Protection: Wires should not be exposed to the air directly. For example, when connecting an explosion-proof pressurized enclosure to an audio-visual alarm line, an explosion ...



Proper installation, wiring, and usage are critical to ensuring the safety and functionality of these systems. Below, we will discuss the correct wiring methods for an explosion-proof...



The receptacles are dead-front construction. Electrical connection between it and plug is accomplished after plug fully inserts into receptacle and rotated clockwise.



Distribution Box Installation: Location Is Everything
Fundamental Principle : Your safest distribution box is the one that's not in the hazardous area at all. Always ask: "Does this need to be ...



The explosion-proof power distribution box and the explosion-proof lighting distribution box should be set separately. If they are combined in the same distribution box, the power and ...



KBH05 Series- Explosion proof Terminal Box
Features: 1□Application in hazardous area : Zone 0, Zone 1 and Zone 2, Zone 21 and Zone 22...more

Contact Us

For more information, pricing, or custom energy solutions, please contact us:

Website: <https://gdroofing.co.za>

Email: sales@gdroofing.co.za

Phone: +27 72 418 9365

Address: 22 Electron Avenue, Isando, Johannesburg, 1600, South Africa

This document is for informational purposes only. Specifications subject to change without notice.

