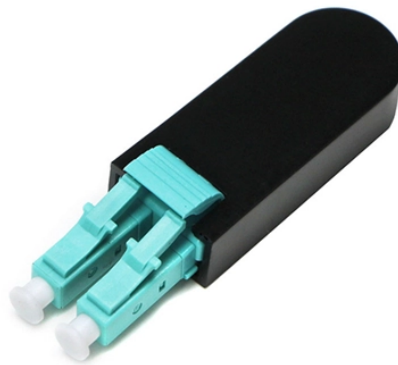


Huawei optical splitter transmission distance



Overview

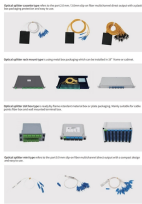
It supports 2:8 passive optical splitting for two channels and uplink backup. This passive aggregation module has no need for mains power supply or ELV rooms, minimizing risks of fire and enabling. 1. Indoor OLT Applicable to COs or indoor base stations, each OLT can typically carry 4,000 to 6,000 users and each OLT rack can house two or three OLTs. Generally, the coverage radius, that is, the distance between an OLT and the farthest optical network terminal (ONT), should be a maximum of 6. High-performance 100G - 800G, single fiber capacity 96T, optical and electrical in one platform, flexible in board dimensions, and smooth evolution to 1T/2T. Real-time monitoring and intelligent diagnostics on the network at every level every time, covers service, optical channel, fiber failure. The G. 651 standard optical fibers are commonly used MMFs that can transmit between 800 nm to 900 nm or 1200 nm to 1350 nm optical signals. MMFs are marked with "MM". Generally, the optical fibers of the OM1 and OM2 classes are orange, and those of the OM3 and OM4 classes are light green. Figure 3-1. Huawei Technologies Co Ltd. With this new optical splitter, operators can automatically identify and generation topological maps of the optical. How Huawei Splitter 1.9 works in FTTH?

□□ An uneven splitter, also known as an unbalanced or asymmetric splitter, is a type of passive optical splitter that divides the incoming optical power unevenly among the output ports.

Huawei optical splitter transmission distance



Therefore, MMFs are often used with multi-mode optical modules in short-distance and low-cost transmission scenarios. On the basis of fiber diameters and modal bandwidths, MMFs are classified ...



It supports 2:8 passive optical splitting for two channels and uplink backup. It also supports mixed use of optical modules in a group and up to 2 km transmission distance.



It supports 2:8 passive optical splitting for two channels and uplink backup. It also supports mixed use of optical modules in a group and up to 2 km transmission distance. This passive aggregation module ...



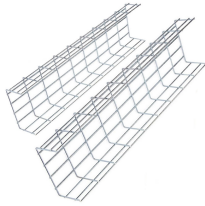
This has resulted in a comprehensive solution that implements full pre-connection, cascading, and uneven optical splitting technologies, culminating in the ODN 3.0 solution.



Overview The SPL2605 can be independently integrated into an FDT or FAT, or encapsulated in a tray-mounted splitter SPL9201 for optical splitting in an ODF and FDT. The splitter ...



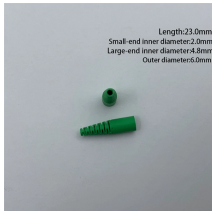
In the case of a 70/30 splitter, approximately 70% of the optical power is distributed to one output port, while the remaining 30% is directed to the other output port.



This project highlights how Huawei's PON splitter solutions can drive cost-effective and reliable FTTH expansions, even in densely populated areas where demand for high-speed internet is ...



Huawei's ODN 3.0 solution enhances fiber network construction through two transformative technologies: uneven optical splitting and pre-connection, which improve efficiency and reduce costs.



Simplified O& M Real-time monitoring and intelligent diagnostics on the network at every level every time, covers service, optical channel, fiber failure distance of more than 160 km.



With this new optical splitter, operators can automatically identify and generation topological maps of the optical distribution network (ODN) for fiber-to-the-home (FTTH) networks, the...

Contact Us

For more information, pricing, or custom energy solutions, please contact us:

Website: <https://gdroofing.co.za>

Email: sales@gdroofing.co.za

Phone: +27 72 418 9365

Address: 22 Electron Avenue, Isando, Johannesburg, 1600, South Africa

This document is for informational purposes only. Specifications subject to change without notice.

