

Huijue Fiber Channel Switch Installation

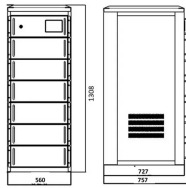


Overview

This is a low pin count interface for connecting the switch to a Gigabit Ethernet PHY, to a fiber optic transceiver, or to another switch. The following sections describe these applications, the compatible devices, how to connect them, and how to configure and manage this. Huijue Net integrates prefabricated buildings and intelligent modular data center technologies. Integrating intelligent temperature control, power supply, lithium battery and AI technology Huijue Net cabinet adopts modular design, simple installation, easy expansion, rich accessories, and meets the. Brocade Fibre Channel switches deliver industry-leading performance that shatters bottlenecks and simplifies scale-out network architectures. Get the high-performance, availability, and ease of management you need for a solid foundation to grow the storage network you want. Since its establishment in 2002, it has been dedicated to providing hardware, software, and technical services for wired and wireless transmission infrastructure network construction to domestic operators such as. A newly added feature on some Microchip Gigabit Ethernet switches is a serial Gigabit media independent interface (SGMII) for one of the ports. The following. ALL STATEMENTS, INFORMATION, AND

RECOMMENDATIONS IN THIS MANUAL ARE BELIEVED TO BE ACCURATE BUT ARE PRESENTED WITHOUT WARRANTY OF ANY KIND, EXPRESS OR IMPLIED. USERS MUST TAKE FULL RESPONSIBILITY FOR THEIR APPLICATION OF ANY PRODUCTS. THE SOFTWARE LICENSE AND LIMITED WARRANTY FOR THE ACCOMPANYING. As a leading manufacturer and supplier of fiber optic components, we consistently provide high-quality fiber optic components, fiber optic active connectors, optical splitters, fiber optic adapters, fiber optic cables and other products.

Huijue Fiber Channel Switch Installation



The switch is designed to be installed in an environment where there is a sufficient volume of air available to cool the supervisor engines, modules, and power supplies.



Fibre Channel switch configuration includes setting domain IDs, configuring the long-distance mode for links, and creating zones. Channel switch configuration includes setting domain IDs, config



From the initial consultation to the final installation, their team was patient, professional, and dedicated to ensuring that my needs were met. One thing that really stood out to me was their attention to detail.



As a leading Fiber Optical Components manufacturer and supplier, Huijue has been providing customers with the best and most suitable products and solutions. Our headquartered in Shanghai, it ...



This is a low pin count interface for connecting the switch to a Gigabit Ethernet PHY, to a fiber optic transceiver, or to another switch. The following sections describe these applications, the compatible ...



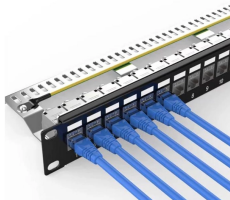
Accelerate data access with the exceptional availability, powerful performance, and easy installation with Brocade SAN Switches.



Founded in 2002, Huijue Network is a high-tech service provider integrating intelligent network communication equipment and computer intelligent network communication system integration and ...



Huijue Net cabinet adopts modular design, simple installation, easy expansion, rich accessories, and meets the needs of different users in multiple directions.



Founded in 2002, Huijue Network is a high-tech service provider integrating intelligent network communication equipment and computer intelligent network ...



With 20 years of focus, it provides integrated outdoor cabinets, optical fiber splitter boxes, energy storage equipment rooms, ETC cabinets and other communication equipment for operators such as ...



Panduit offers a variety of Fiber Cabling Systems and configurations and meet the unique needs of a data center project of any scale. This guide covers common considerations for using these products, ...

Contact Us

For more information, pricing, or custom energy solutions, please contact us:

Website: <https://gdroofing.co.za>

Email: sales@gdroofing.co.za

Phone: +27 72 418 9365

Address: 22 Electron Avenue, Isando, Johannesburg, 1600, South Africa

This document is for informational purposes only. Specifications subject to change without notice.

