

## IK10 Cable Relay Frame for Broadcasting Optical Cables



### Overview

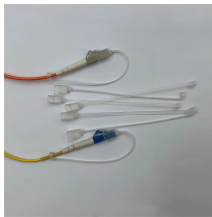
Versatile Use: Suitable for fusion splicing. Cable Entry: One oval hole and six round holes for. The Clos-8A-192 fiber optic splice closure can accommodate up to 192 splicing points as an outdoor closure. It serves as a splicing point for feeder cables to connect with distribution cables in FTTH backbone network systems. This closure integrates fiber splicing, storage, and cable management. Ready your network for the High Speed Migration CommScope offers a variety of easy-to-install frames, racks and cabinets specially engineered for network equipment and fiber cable management. A leading US manufacturer and provider of fiber optic cable solutions and accessories for the Broadcast, Pro-Audio, and Pro-AV markets. NOW AVAILABLE! Complex opticalCON DRAGONFLY Fiber Cables Transmit UHD 4K & 8K Signals Very Low Loss Unique Lensed Connectors - 2 signal contacts - 2 power Complex. The microODC is a compact and versatile splice closure designed for FTTH networks. It provides IP68 environmental protection, IK10 impact protection, and is 2 litres in volume. It can be installed in underground chambers, direct buried, pole mounted, or attached to building facades. The closures. Split cable entry system for routing and sealing cables with connectors, providing

an IP66 / UL Type 12/4X\* rating and strain relief for cable diameters from 1 to 16 mm (single-hole grommets KT 1 - 15) and 13 to 35 mm (single-hole grommets KTG 13 - KT 34). These ratings, defined by the IEC 62262 standard, indicate how well a display can resist mechanical impacts in harsh environments. An IK10 display offers the highest protection level, withstanding impacts up to 20 joules, making it ideal for vandal-proof and outdoor HMI applications.

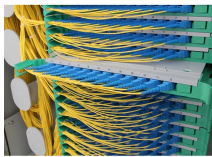
## IK10 Cable Relay Frame for Broadcasting Optical Cables



It serves as a splicing point for feeder cables to connect with ...



This composite cable integrates power line for TV camera, control line, and optical fiber for video and audio transmission. The cable is standardized by ARIB as a cable for TV camera.



CommScope offers a variety of easy-to-install frames, racks and cabinets specially engineered for network equipment and fiber cable management.



It provides IP68 environmental protection, IK10 impact protection, and is 2 litres in volume. It can be installed in underground chambers, direct buried, pole mounted, or attached to building facades.



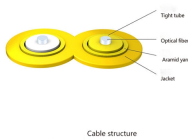
It serves as a splicing point for feeder cables to connect with distribution cables in FTTx backbone network systems. This closure integrates fiber splicing, storage, and cable management within a ...



These Open Face Frame Cabinets are designed to speed up assembly, save precious time and are designed specifically for fiber optic applications. They provide quick access and availability. Choose ...



This allows cable assemblies to be daisy chained together, making it simple to extend camera range without the need for gender-changing adapters. Power or control signals for the cameras may be ...



Choose from a full line of Belden broadcast cables designed to deliver against real-time requirements across a wide variety of audiences including radio/TV stations, outside broadcast vans, production ...



The version with threaded bushings enables the cable entry frame to be screwed onto the housing from the inside out. This protects against vandalism and tampering with the housing from the outside.



Camplex manufactures certified fiber optic solutions to enhance broadcast performance, offering diverse configurations to meet unique requirements.



This article explains how IK ratings work, the relationship between cover glass thickness and impact resistance, and how to design a custom IK10-rated display for your industrial application.

## Contact Us

For more information, pricing, or custom energy solutions, please contact us:

Website: <https://gdroofing.co.za>

Email: [sales@gdroofing.co.za](mailto:sales@gdroofing.co.za)

Phone: +27 72 418 9365

Address: 22 Electron Avenue, Isando, Johannesburg, 1600, South Africa

This document is for informational purposes only. Specifications subject to change without notice.

