

## Incoming power line to distribution box and meter

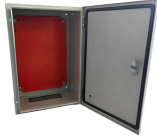


### Overview

The article provides an overview of residential electrical service components, including how power enters a home through service drop or lateral, and is managed through the service meter, main disco.



## Incoming power line to distribution box and meter



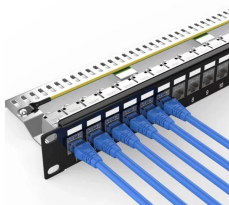
Learn how to read and understand a wiring diagram from the electric meter to the breaker box in order to troubleshoot and fix electrical problems in your home. Get step-by-step instructions and diagrams for ...



Learn about the different components of a residential utility pole diagram, including power lines, transformers, meters, and more. Find out how these elements work together to deliver electricity to ...



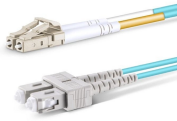
Explore a comprehensive guide to residential electric meter box wiring diagrams, offering clear instructions for safe and efficient installation.



The wiring that links the utility company's service point to a home's electrical distribution system is the main service connection. This "meter to panel" wiring establishes the pathway for all ...



The main electrical panel serves as the central hub for distributing electricity throughout the home. It receives power from the electric meter and directs it to various circuits that power lights, ...



Clear wiring diagram for residential electric meter box, showing connections, safety components, and layout for accurate installation and maintenance.



The article provides an overview of residential electrical service components, including how power enters a home through service drop or lateral, and is managed through the service meter, main ...



Understanding the Key Components of a Power Supply System Meter Base: This is the first point of connection between the utility grid and the building's internal distribution. It houses the electric meter, ...



The meter measures the amount of electricity used and is usually located outside the building. From the meter, the power line is connected to the main panel, also known as the distribution board or breaker ...



These three wires enter the meter box and then connect to the main panel. In the following tutorial, we will show how to wire 120V single-phase and 240V split-phase circuit breakers and loads inside a ...

## Contact Us

For more information, pricing, or custom energy solutions, please contact us:

Website: <https://gdroofing.co.za>

Email: [sales@gdroofing.co.za](mailto:sales@gdroofing.co.za)

Phone: +27 72 418 9365

Address: 22 Electron Avenue, Isando, Johannesburg, 1600, South Africa

This document is for informational purposes only. Specifications subject to change without notice.

