

## Indoor Single-Mode Dual-Core Fiber Optic Terminal Box



## Indoor Single-Mode Dual-Core Fiber Optic Terminal Box



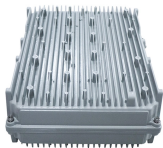
Charles offers a comprehensive lineup of fiber terminals designed to provide the industry's highest degree of flexibility in fiber types, adapters and splicing methods supported.



CommScope wall boxes offer efficient fiber connectivity. Easy installation, versatile sizes, and superior cable management.



It fully supports mechanical/fusion splicing, termination, and cable management ...



6-Core FTTH Fiber Distribution Termination Box with 6 SC Adapters, IP65 Waterproof, Wall-Mount Enclosure for Residential/Commercial Fiber Optic Splicing & Management (with 6 SC Adapter)



The PPFTB-104A-SCA comes with 4 Simplex SC/APC Coupler Ports installed with 4 Simplex SC/APC Single mode Pigtailed ready for splicing. Indoor Wall Mounted, Single Door Optical Fiber Information ...



FTB86E wall outlet is an indoor terminal applied in the FTTX network to connect the drop cable and optical devices through fiber port. Max can fusion 1 core, 2 cores and 4 cores and supports splicing, ...



Corning has a wide variety of hardware solutions to choose from to fit your cabling needs. Choose from racks, panels, modules, splice trays, ethernet fiber switches and other structured cabling components.



Dual door fiber enclosures provide our highest level of distribution panel security. They give you the option to separately lock the network and distribution doors for more control over panel access. The ...



This 12-port fiber terminal box from Fiberhome is tailored for SC single-mode fiber connections, offering full matching components for hassle-free installation.



Supporting both single-mode and multimode fibers, the indoor fiber termination box from Unisol accommodates up to two fibers, making it suitable for installations requiring limited but highly stable ...



It fully supports mechanical/fusion splicing, termination, and cable management within a single, compact indoor unit. The integrated optical interface allows for seamless linking of fiber patch cords to the ...

## Contact Us

For more information, pricing, or custom energy solutions, please contact us:

Website: <https://gdroofing.co.za>

Email: [sales@gdroofing.co.za](mailto:sales@gdroofing.co.za)

Phone: +27 72 418 9365

Address: 22 Electron Avenue, Isando, Johannesburg, 1600, South Africa

This document is for informational purposes only. Specifications subject to change without notice.

