

Indoor distribution box incoming line specifications

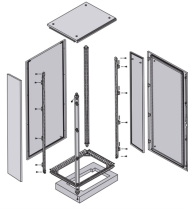


Overview

Incoming line part: Displays the incoming line source of the distribution box, which may be a single-line incoming line or multiple-line incoming lines (such as normal power supply and backup power supply), and marks the model and rated breaking current of the. Incoming line part: Displays the incoming line source of the distribution box, which may be a single-line incoming line or multiple-line incoming lines (such as normal power supply and backup power supply), and marks the model and rated breaking current of the. The Distribution box system diagram mainly includes the following parts: Incoming line part: Displays the incoming line source of the distribution box, which may be a single-line incoming line or multiple-line incoming lines (such as normal power supply and backup power supply), and marks the. In this article, we will explore the specifications for household distribution boxes and provide guidance on how to install them correctly. For distribution boxes that handle only lighting circuits or small power loads, if the incoming wire size is less than 10 square millimeters and the number of. That cable running from your main service entrance to your distribution box isn't just another wire + it's the critical link that determines how safely and efficiently power flows through

your entire building. Make poor choices here, and you're potentially looking at: Electrical systems are like a. integration based upon the configuration requirements of their application. BAHRA Load Centers are powered by the best selection of international proven quality of breakers by BAHRA to provide reliable circuit protection against. be free standing floor mounted having compact design. The Board shall be closed, dust protected, weather proof and shall be made vermin proof with a special type lining.

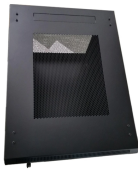
Indoor distribution box incoming line specifications



Unique box wrapper profile developed using latest technologies and simulation software ensures the strongest resistance to high crushing forces. This profile helps in preventing the twisting of the box ...



Just like you wouldn't want a weak or clogged artery in your body, you don't want subpar incoming lines feeding your distribution box. We'll walk through everything you need to consider, ...



Mini Center Compact is a reliable range of distribution boards allowing maximum flexibility, offering wide choice of incomers: Switch Disconnecter, MCCB, MCB, RCCB, RCD or Direct Cable Connection.



Installing a household distribution box requires careful attention to specifications and safety guidelines. Understanding these parameters is vital for ensuring the safety and efficiency of ...



In instances where the incoming service is adequate and the service cable size is #2 CU or smaller, it is permissible for the contractor to disconnect in the end line box in order to perform ...



The document describes distribution boxes for connecting indoor and outdoor cables. It provides details on boxes that accommodate 20, 50, or 100 cable pairs. The ...



Application or Wall Box has been optimized for MDU (Multi Dwelling Unit) applications. With the Clearview® Cassette at its heart, the FieldSmart FDP Wall Box gives service providers plug-and-play



The single-line diagram is the blueprint for electrical system analysis. It is the first step in preparing a critical response plan, allowing you to become thoroughly familiar with the electrical distribution ...



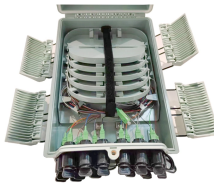
The materials covered under this Specification shall comply with the requirement of the latest version of the following standards as amended up to date, except where specified otherwise.



This bulletin contains information on application, features, and wiring diagrams and dimensions for OEM Panelboard Interiors.



The removable gland plate should be provided in the lower portion of the box to accommodate all brass glands (according to requirement) for incoming and outgoing cables.



Electrical parameter description: Equivalent to the electrical nameplate, it provides basic electrical information of the distribution box, such as number, rated power, required coefficient, power ...

Contact Us

For more information, pricing, or custom energy solutions, please contact us:

Website: <https://gdroofing.co.za>

Email: sales@gdroofing.co.za

Phone: +27 72 418 9365

Address: 22 Electron Avenue, Isando, Johannesburg, 1600, South Africa

This document is for informational purposes only. Specifications subject to change without notice.

