

## Industrial power distribution box conduit connector specifications



## Industrial power distribution box conduit connector specifications



Choose from our selection of box connectors, including conduit and fittings, cord grips, and more. Same and Next Day Delivery.



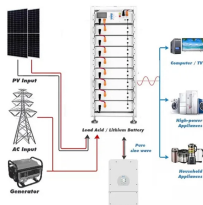
A conduit can be used to enclose and protect electrical wiring. It provides a safe pathway for electrical cables, protecting them from damage, moisture, and other external factors.



A complete collection of watertight devices for demanding industrial environments including connectors, inlets, outlets, covers and rugged FD boxes that allows mounting of single-gang devices in multi ...



The contractor or owner will be responsible for any damage to the conduit or cable occurring during backfilling, and any additional cost to MTEMC will be billed to the contractor.



Manufacturers listed below are not relieved from meeting these specifications in their entirety. Products in compliance with the specification and manufactured by others not named will be considered only if ...



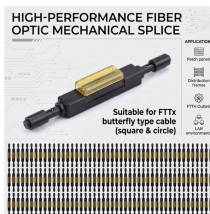
The knockouts, which are usually circular in shape, create an opening to accommodate industry standard conduit sizes used in residential, commercial or industrial electrical system wiring applications.



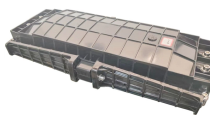
The innovative Homac Flood-Seal® connectors offer quick and easy installation of waterproof underground connections without time-consuming tape or heat-shrink insulation



The 4-way design provides flexibility, allowing you to connect and redirect conduit lines in various directions, ensuring efficient power distribution and cable management. Built to withstand ...



All wiring shall be installed in Rigid PVC conduit and secured to PVC boxes and cabinets by means of proper fittings. All boxes, access fittings and covers shall be furnished with threaded brass inserts, ...



Note: When assembled with sealing type cover, GUA outlet boxes provide adequate sealing for 40% fill in hazardous areas - Class I, Groups C, D; Class II, Groups E, F, G; and Class III.

## Contact Us

For more information, pricing, or custom energy solutions, please contact us:

Website: <https://gdroofing.co.za>

Email: [sales@gdroofing.co.za](mailto:sales@gdroofing.co.za)

Phone: +27 72 418 9365

Address: 22 Electron Avenue, Isando, Johannesburg, 1600, South Africa

This document is for informational purposes only. Specifications subject to change without notice.

