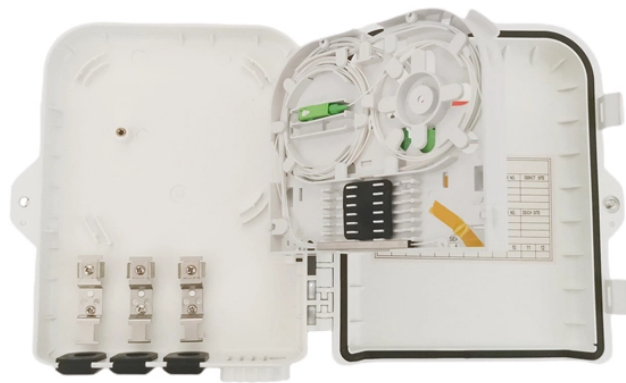


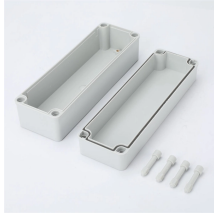
Installation Method of Cable Tray in Computer Room



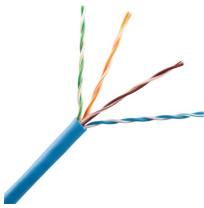
Overview

In this video, we'll show you how to install and set up the Underdesk Cable Management Tray, a sleek and practical solution for hiding and organizing all those messy cables under your desk. This metal tray, equipped with a lockable bracket, is perfect for keeping your workspace clean. Whether you're building a commercial setup or upgrading an industrial plant, proper cable tray installation ensures neat wiring, safe access, and easy maintenance. This guide breaks down the process step by step. Below is the detailed cable tray installation method statement not only for cable tray but also applicable for GI ladder and trunking for indoor and outdoor applications and in service rooms like pump rooms, electrical rooms and plant rooms etc. This guide covers the critical steps, from selecting the right electrical cable tray and performing accurate cable fill. This method statement describes a detailed procedure for properly installing cable trays and conduits for the Feeder System.

Installation Method of Cable Tray in Computer Room



Step-by-step on-site guide: learn how to plan, mark, support, and install cable trays correctly, from shop drawing approval to final checks.



Step-by-step cable tray and conduit installation method with safety, quality and inspection procedures as per IEEE standards.



Trays shall be stored on flat surfaces with adequate support, off the ground, in a dry, shaded area. Accessories shall be stored in labeled containers or shelves for easy identification and access. ...



This guide covers the critical steps, from selecting the right electrical cable tray and performing accurate cable fill calculations to managing a safe cable pull through and ensuring all bonding and grounding ...



In this video, we'll show you how to install and set up the Underdesk Cable Management Tray, a sleek and practical solution for hiding and organizing all those messy cables under your desk.



This document provides the method statement for installing cable trays and ladders at a data center project site. It outlines the scope, materials, equipment, responsibilities, and steps for storage, pre ...



Learn everything about cable tray installation with our complete guide. Discover types, steps, and safety tips for efficient electrical cable management.



Mastering cable tray installation is crucial for creating a safe, organised, and efficient cable management system. By following this step-by-step guide, you can ensure a seamless setup that ...



This document provides the method statement for installing cable trays and ladders at a data center project site. It outlines the scope, materials, equipment, ...



Below is the detailed cable tray installation method statement not only for cable tray but also applicable for GI ladder and trunking for indoor and outdoor applications and in service rooms like pump rooms, ...



The purpose of this article is to define the sequence and methodology for the installation of electrical cable trays, cable trunking, cable raceways and boxes, junction and pull boxes.

Contact Us

For more information, pricing, or custom energy solutions, please contact us:

Website: <https://gdroofing.co.za>

Email: sales@gdroofing.co.za

Phone: +27 72 418 9365

Address: 22 Electron Avenue, Isando, Johannesburg, 1600, South Africa

This document is for informational purposes only. Specifications subject to change without notice.

