

Installation of electrical distribution box throughout the house of a large flat



Installation of electrical distribution box throughout the house of a



From choosing the right type of electrical box to determining the power flow route, we'll ensure you have all the information you need to complete your project safely and correctly.



We have a wide range of options available for home upgrades and renovations—from simple electrical panel replacement to more complex projects such as whole-house wiring upgrades, new breaker ...



Learn how to install a distribution box safely and correctly. Covers wiring, placement, standards, and expert tips for a compliant setup.



Before starting the installation, finding a proper place for putting the distribution box is crucial, because it largely decides the safety and convenience of maintenance. Let's see what factors ...



In this step-by-step tutorial, we'll cover: Tools you need...more. Learn how to properly install an electrical box safely and efficiently.



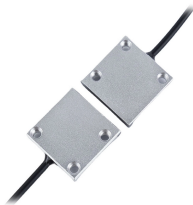
Find out how to properly wire an electrical panel box with a comprehensive diagram and step-by-step instructions.



The two large hot conductors in a service panel or subpanel connect to the two hot buses that distribute power to house circuits. Those two hot wires (and their buses) are called Phase A and Phase B ...



Electrical box installation is regarded as easy work—more like carpentry than electrical wiring. But there are still some common errors that do-it-yourselfers frequently make. Follow these ...



Hey, in this article we are going to see the Single Phase Distribution Box Wiring Diagram and Connection Procedure. A distribution board or distribution box is where the main power supply is ...



Whether it is residential buildings, commercial facilities or industrial sites, the correct and safe installation of distribution boxes is crucial to ensure stable power supply, prevent electrical ...

Contact Us

For more information, pricing, or custom energy solutions, please contact us:

Website: <https://gdroofing.co.za>

Email: sales@gdroofing.co.za

Phone: +27 72 418 9365

Address: 22 Electron Avenue, Isando, Johannesburg, 1600, South Africa

This document is for informational purposes only. Specifications subject to change without notice.

