

## Insufficient switches in the distribution box



### Overview

Check the electrical load and ensure that the sensors do not exceed the 10 Amp maximum. Check the tightness of electrical connections along the power. In modern power systems, distribution boxes are the core equipment for power distribution and control, and their stable operation is crucial to ensuring the safety and reliability of power supply. The very cheapest one you can find at a local hardware store (or online) will work great. This guide shows you how to organize circuit breaker wiring properly. Do not touch live parts, turn off the corresponding power switch to avoid the risk of electric shock.

## Insufficient switches in the distribution box



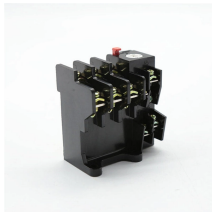
Entry Inspection: Verify that the waterproof plug box connections remain accessible after the base is fully secured. How to Fix a Distribution Box to a Support Plate? To fix a waterproof ...



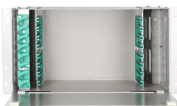
Be sure that the power distribution box has sufficient power provided to it. Long cable runs can result in a voltage drop, which can be solved by using a heavy gauge wire. Check wires/DIN terminal clasps ...



If you just installed your own new electrical box, and things aren't working properly, it's not fun. The good news is that most issues are easy to troubleshoot, especially if you follow the steps ...



However, the internal layout of some distribution boxes is chaotic, and the wires are messy, which not only affects the appearance, but also may cause wiring errors and increase the risk ...



Circuit breaker wiring configurations involve organizing main switches, busbars, and branch breakers within a distribution box. Proper setups ensure balanced electrical loads, ground fault protection, and ...



To sum up, qualified construction and maintenance operations, in conjunction with standards and safety measures, can effectively prevent and solve distribution box failures.



There is always a switch trip in the distribution box. There are only five possible reasons. Let me give you a detailed explanation. 1. Switch damage  
Switch what bad things can happen, trip is ...



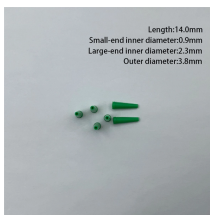
Many electrical codes require distribution boxes to include proper isolation devices for maintenance and safety access. Using compliant isolators helps facilities meet standards, pass ...



If you're not sure, it's best to contact a professional electrician for repairs. Preventive measures: Once the fault is resolved, regular inspection and maintenance of the distribution box is recommended to ...



Circuit breaker wiring configurations involve organizing main switches, busbars, and branch breakers within a distribution box. Proper setups ensure balanced ...



Industries looking for dependable and continuous power distribution must understand the reasons behind switchgear failures and apply cutting-edge solutions such as continuous temperature ...

## Contact Us

For more information, pricing, or custom energy solutions, please contact us:

Website: <https://gdroofing.co.za>

Email: [sales@gdroofing.co.za](mailto:sales@gdroofing.co.za)

Phone: +27 72 418 9365

Address: 22 Electron Avenue, Isando, Johannesburg, 1600, South Africa

This document is for informational purposes only. Specifications subject to change without notice.

