

# Introduction to Drop Optical Cable Structure



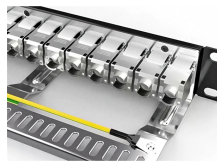
## Overview

Drop cable (known as FTTH drop cable ) is the cable that runs from the distribution point or cable to the subscriber/user. Drop cable construction is that the optical fiber unit is positioned in the centre; two parallel strength members are placed at the two sides; a steel wire as the. Fiber Optic Drop cable is mostly the single-core, double-core structure, but can also be made into a four-core structure, flat figure-8 structure, reinforcement is located in the center of the two circles, metal or non-metallic structure can be used, the fiber is located in the geometric center of. The main types of drop cable include indoor drop cable (GJXFH, GJXH, GJXKH), outdoor self-supporting drop cable (GJYXCH, GJYXFCH, GJYXKCH), flat drop cable, and circular drop cable. Think of it as the “last mile” of the fiber network — the part that brings the signal directly to you. The structure of the lead-in.

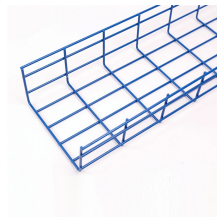
## Introduction to Drop Optical Cable Structure



The drop optical cable constitutes the optical cable line from the user access point to the terminal, which is crucial to the FTTH network. Drop cables are specially designed for the last mile in ...



Round drop cable usually contains a single bend-insensitive optical fiber buffered and surrounded by dielectric strength members and an outer jacket, which can provide durability and ...



In this article, you will learn everything you need to know about fiber optic drop cables.



Terms such as FRP, steel wire, and Kevlar (aramid yarn) are frequently mentioned, but their real-world implications are not always clearly understood. This article explains how different ...



What Is FTTH Drop Cable? FTTH (Fiber to the Home) drop cable is the final-section optical cable that connects the distribution point (fiber distribution box, FDB) to the subscriber's ...



Learn what fiber optic drop cable is, its main types, structures, and FTTH applications. Compare indoor, outdoor, flat, and aerial drop cables for your project.

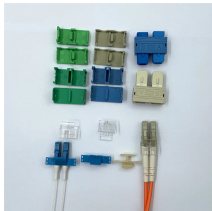


In this blog post, we'll delve into the structure of ordinary and self-supporting drop cable, the butterfly-shaped drop cable and the techniques used for their splicing.



WebTelecoms Cabling

ODN Optical cable lines from the business convergence point to the users are mainly divided into 4 sections: backbone, wiring/distribution, introduction, and home segment, as shown in ...



A drop cable is the final section of a fiber optic network that connects the main line on the street to the user's home, office, or building. Think of it as the "last mile" of the fiber network — the ...



In any FTTH (Fiber to the Home) network, the drop cable is the final and most critical part of the optical access network. It connects the outdoor distribution point to the customer premises and ...

## Contact Us

For more information, pricing, or custom energy solutions, please contact us:

Website: <https://gdroofing.co.za>

Email: [sales@gdroofing.co.za](mailto:sales@gdroofing.co.za)

Phone: +27 72 418 9365

Address: 22 Electron Avenue, Isando, Johannesburg, 1600, South Africa

This document is for informational purposes only. Specifications subject to change without notice.

