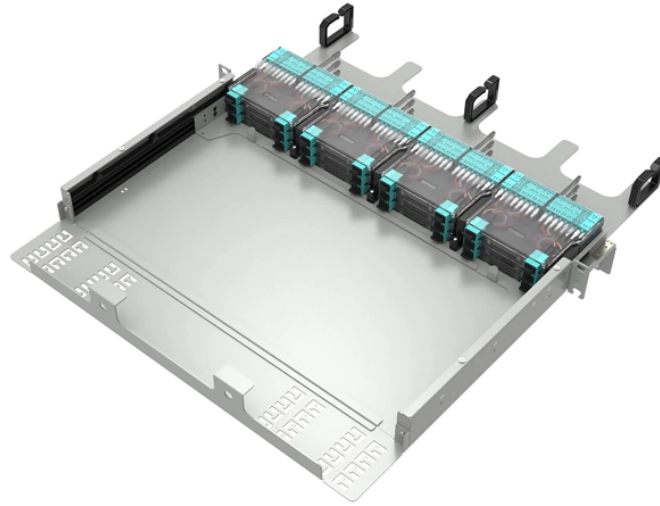


# GDR Telecom Site Energy Systems

## Is GYXTW multimode fiber



## Is GYXTW multimode fiber



The Product Description The structure of GYXTW fiber cable is a loose sleeve made of fiber into a high modulus material. The loose casing is filled with waterproof compound.



GYXTW fiber optic cable is an outdoor use optical fiber cable suitable for duct and aerial applications. GL supply GYXTW cable from 2 fiber cores to 24 fiber cores.



GYXTW Fiber Optic Cable Series ZMS specializes in manufacturing and selling single-mode and multimode fiber optic cables, supporting customization and complete models.



This cable typically contains single-mode or multimode optical fibers enclosed within a loose tube, which is filled with gel to prevent moisture ingress. The steel tape armor provides additional protection ...



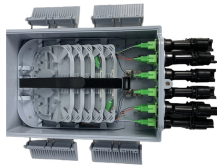
GYXTW is a fiber optic cable that can serve overhead, buried and through-tube scenarios according to line design requirements.



GYXTW Multimode OM3 Fiber Cable 2-12 core multimode fiber, Working wavelength 850nm and 1310nm, Central loose tube structure,Moisture-proof: Double-sided plastic coated rolled steel tape ...



It includes information on single-mode and multimode fibers, their attenuation, and bending radius requirements. Additionally, it specifies packaging and marking requirements, as well as the provision ...



Fiber Counts: Available from 2 to 144 cores (common counts: 2, 4, 6, 8, 12, 24). Fiber Types: Supports both single-mode (e.g., G.652D, G.657A1) and multi-mode (e.g., OM1/OM2/OM3/OM4) fibers.



Unitube Light Armored GYXTW is an outdoor use optical fiber cable suitable for ...



Unitube Light Armored GYXTW is an outdoor use optical fiber cable suitable for duct and aerial applications. We supply GYXTW from 2 fiber cores to 24 fiber cores. Both single mode type and ...

## Contact Us

For more information, pricing, or custom energy solutions, please contact us:

Website: <https://gdroofing.co.za>

Email: [sales@gdroofing.co.za](mailto:sales@gdroofing.co.za)

Phone: +27 72 418 9365

Address: 22 Electron Avenue, Isando, Johannesburg, 1600, South Africa

This document is for informational purposes only. Specifications subject to change without notice.

