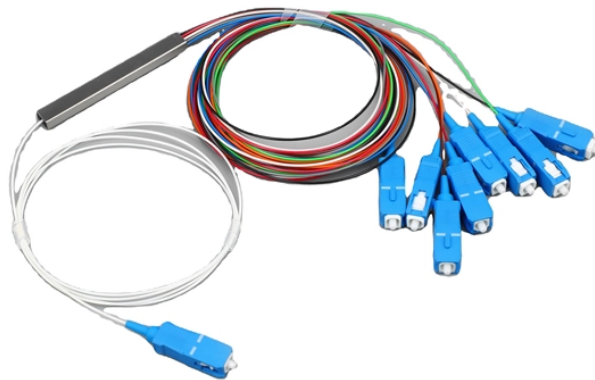


Is a 4dB loss on a pigtail fiber usable



Overview

A uni-directional test will be conducted on all pigtail splices with no greater than a. 8 dB after 5 repeated attempts results in the replacement and re-splicing of that pigtail. For multimode fiber, the loss is about 3 dB per km for 850 nm sources, 1 dB per km for 1300 nm. Patch Cord: Connector on both ends (e. Patch Cord: Designed for direct device-to-device or panel-to-device. At TREND Networks, we are frequently asked how much loss is allowed when conducting testing on fibre optic cabling. So how do you determine acceptable loss?

When testing fibre optic cabling, determining acceptable loss is. This calculator helps you estimate the total attenuation (signal loss) in a fiber optic cable link. An Optical Power Meter and Laser Light Source will be used to measure power loss on each completed ring or distribution span to verify continuity between fibers (no fibers incorrectly spliced. The FBB Calculator is a simple yet powerful online tool that calculates the total fiber optic link loss (in decibels, dB) by factoring in losses caused by: By entering these values, users can instantly determine the total loss for a fiber optic link, enabling better

system design, troubleshooting.

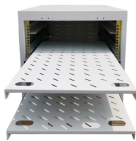
Is a 4dB loss on a pigtail fiber usable



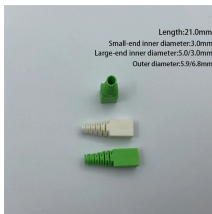
Learn how to accurately calculate fiber optic loss to ensure optimal network performance. Explore types of loss, industry standards, and step-by-step methods for assessing link loss and power budget.



Understand fiber optic pigtails — definition, types, and how they differ from patch cords. Learn why pigtails ensure reliable, low-loss fiber terminations.



Calculate total fiber optic link loss easily with our FBB Calculator. Input fiber length, connector & splice losses for accurate dB loss results.



Executive Summary: A fiber optic pigtail is one of the most commonly specified yet least understood components in structured cabling. Get the wrong connector type, the wrong polish, or ...



A uni-directional test will be conducted on all pigtail splices with no greater than a .8 dB loss accepted. Any loss higher than a .8 dB after 5 repeated attempts results in the replacement and re-splicing of ...



Corning's link loss budget calculator will calculate your total link loss and tell you if your system falls within Corning's recommended guidelines.



Learn about fibre optic cabling loss limits & how to calculate them. Gain insights from experts on acceptable loss for cabling projects & explore the standards.



Fiber loss, or attenuation, refers to the reduction in optical power as light travels through a fiber optic cable. While some loss is expected, excessive or unexpected loss can lead to poor ...



Should that fiber be rejected? Well, no, because the uncertainty of the loss budget is probably $\sim \pm 0.5\text{dB}$, providing a range of 7.5 to 8.5dB loss. The uncertainty of the loss test is probably in the same ...



This calculator helps you estimate the total attenuation (signal loss) in a fiber optic cable link. Here are the details and instructions about each field and how they contribute to the calculation:

Contact Us

For more information, pricing, or custom energy solutions, please contact us:

Website: <https://gdroofing.co.za>

Email: sales@gdroofing.co.za

Phone: +27 72 418 9365

Address: 22 Electron Avenue, Isando, Johannesburg, 1600, South Africa

This document is for informational purposes only. Specifications subject to change without notice.

