

## Is the distribution box monitored



### Overview

Many modern power distribution boxes are equipped with digital monitoring systems, voltmeters, ammeters, and indicator lights. A distribution box, also known as a distribution board, electrical panel, or breaker box, is an enclosure that houses electrical components responsible for distributing electricity throughout a building. Through the new generation of Internet of Things communication technology, the cloud integration of data such as voltage. Remote distribution box monitoring By leveraging the intelligent remote monitoring function, you can collect the electric meter readings and implement networked transmission and control the safety energy. Background Traditional distribution boxes are difficult to implement remote monitoring due to. Today, we're diving into the world of power distribution boxes with smart monitoring features—game-changers that blend cutting-edge technology with practicality, and how a global leader in building solutions is redefining what these systems can do for homes and businesses alike. Imagine walking. The DGM provides accurate end-of-line voltages to Conservation Voltage Reduction (CVR) and Volt-VAR Optimization (VVO) schemes. These innovations improve system reliability, safety, and operational efficiency by enabling real-

time monitoring.

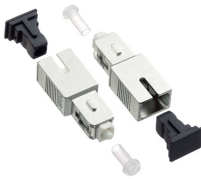
## Is the distribution box monitored



It integrates power distribution, protection, and monitoring capabilities, and is responsible for distributing power to entire commercial or residential buildings. To put it bluntly, the distribution ...



Advances in technology have resulted in the development of smart power distribution boxes that can be controlled remotely and provide real-time monitoring of electrical usage in recent years.



Product positioning Intelligent distribution box monitoring instrument, supporting real-time electrical data collection, energy consumption measurement and safety early warning.



Smart distribution boxes don't just detect issues—they predict and alert users before problems escalate. Whether it's a loose connection causing voltage fluctuations or a circuit drawing ...



The distribution box is embedded with the DTU distribution device, distribution device power module, and distribution device power supply. By leveraging the intelligent remote monitoring function, you ...



Learn how a power distribution box works step by step—from incoming power to circuit protection and smart monitoring—for safe, efficient electricity delivery.



Smart distribution boxes can seamlessly interface with BMS platforms, allowing centralized control and monitoring of electrical systems alongside HVAC, lighting, and security.



In this Paper, the primary focus is on the distribution box health monitoring from which load power distribution monitoring is done. Distribution box is one from which power is distributed to low level.



Modern distribution boxes also serve as monitoring centers, allowing users to quickly identify which circuits are experiencing problems. This centralized approach makes electrical ...



The DGM is a power monitoring solution—also known as a “primary in a box”—that consists of a Bitronics M661 meter, matched Lindsey LEA (low energy analog) sensors, and cabling, plus an optional ...

## Contact Us

For more information, pricing, or custom energy solutions, please contact us:

Website: <https://gdroofing.co.za>

Email: [sales@gdroofing.co.za](mailto:sales@gdroofing.co.za)

Phone: +27 72 418 9365

Address: 22 Electron Avenue, Isando, Johannesburg, 1600, South Africa

This document is for informational purposes only. Specifications subject to change without notice.

