

## Is the small busbar GXM AC or DC



### Overview

Parameters: The max voltage of the positive & negative bus bar is 300V AC/48V DC. This power distribution block includes 2 x M6 Terminal Studs 5 x M4 Terminal Screws. 35), corresponding to usual indoor temperatur Vertical bar ampacity based on work by House nd Tuttle. For dc ratings of other alloys, multiply by: For 6101-T, 0. 992;. Route electricity within switchboards and battery banks; also known as bus bars Create a convenient central grounding point by connecting multiple ground wires In cabinets and other tight spaces, ground multiple wires at one convenient spot Our most conductive metal for electrical applications—all. Busbars are used for high current distribution and at the same time they provide connections for batteries and/or DC equipment. We offer a number of busbars with different current ratings, and a different number of connection terminals. Amphenol IPC busbars are custom designed to meet or exceed your specifications. We have expertise in a broad range of applications, materials, and processes to ensure you have the right solution Power Distribution Busbar applications are primarily low—medium DC voltage, and inductance is not. The following tables have been provided by the Alliance for Telecommunications Industry Solutions (ATIS), T1 Committee, and

represent ampacities for busbar sizes and arrangements typically found in the telecommunications industry.

## Is the small busbar GXM AC or DC



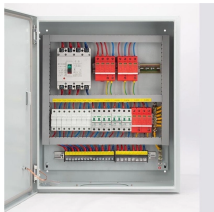
Busbars (bus bars) are integral to power distribution and serve numerous industries including automotive, industrial, and aerospace. Busbars are metal bars that can be composed of numerous ...



The following tables have been provided by the Alliance for Telecommunications Industry Solutions (ATIS), T1 Committee, and represent ampacities for busbar sizes and arrangements typically found ...



Busbar is simply a node (conductor or group of conductors) which collects power from incoming feeder and distribute it to outgoing feeders. A busbar size is defined according to its material and current ...



Bus Conductors Current Rating of Rectangular Aluminum Bus Bar Arrangements Amperes for 6101-T61 Alloy 57% IACS Conductivity Sizes (Inches)



Continuous Rating: 130A AC/150A DC. This power distribution block includes 2 x ...



When planning or upgrading a 12V electrical system, whether in a campervan, boat or off-grid setup, you'll likely come across a component called a busbar. While not the most glamorous part ...



Continuous Rating: 130A AC/150A DC. This power distribution block includes 2 x M6 Terminal Studs 5 x M4 Terminal Screws. Cover: The bus bar terminal block 12v holds transparent polycarbonate cover, ...



In electric power distribution, a busbar (also bus bar) is a metallic strip or bar, typically housed inside switchgear, panel boards, and busway enclosures for local high current power distribution, ...



Busbars are used for high current distribution and at the same time they provide connections for batteries and/or DC equipment. We offer a number of busbars with different current ratings, and a ...



Power Conversion Power Conversion Busbars are designed primarily for medium—high AC voltage, low inductance applications



Choose from our selection of bus bars, including over 650 products in a wide range of styles and sizes. Same and Next Day Delivery.

## Contact Us

For more information, pricing, or custom energy solutions, please contact us:

Website: <https://gdroofing.co.za>

Email: [sales@gdroofing.co.za](mailto:sales@gdroofing.co.za)

Phone: +27 72 418 9365

Address: 22 Electron Avenue, Isando, Johannesburg, 1600, South Africa

This document is for informational purposes only. Specifications subject to change without notice.

