

# Is the terminal box located inside the server room

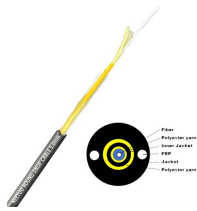


## Overview

When you enter the server room, you'll interact with the terminal in the center. Finish the tutorial raid by extracting via the "Klimov Street" extraction which is located behind the "Skyside" business center. During the tutorial, numerous hints on controls and game mechanics are displayed, but none of them need to be followed in order to complete the raid. Visit Therapist in. NOTE: I have missed to mention some tips that you can use for your Terminal run, which I will state now thanks to the comments below and from your guys' input! You can breach the metal gate if you possess elite level Strength, skipping the bomb altogether You can also open the door together with a. This is our break room/computer server room/ hallway that leads to our employee restroom, we have a customer restroom in the front lobby. Around the Techbot's area there are several boxes labeled "Matrix Punchograph 3005-A". Open one up and get your new pass card. In the instance, you might take several different directions, but. The Gorgofex is absolutely essential for the main quest, and there are three methods to obtain it. After testing all approaches extensively, I've found the Mystery Box method most reliable for newer players, though the crafting method is faster if you know what you're

doing. " Agent 47 infiltrates Hitman 3 's Dubai server room.

## Is the terminal box located inside the server room



The code changes each game, but the terminal locations remain constant: Terminal 1: Always in the server room (first two digits) Terminal 2: Control room upper level (middle two digits) ...



After finally completing Terminal and struggling with the low effort guides people have put out, I took on it for myself to make a clearer guide for people to clear Terminal.



That's a server rack, standard for holding professional IT equipment in one place. Up top is a patch panel, which terminates the connections from the cameras/any other equipment in the office.



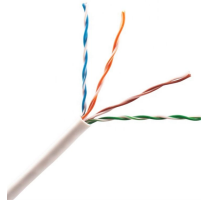
These servers are typically housed in racks and cabinets located within access-controlled server rooms. To ensure optimal performance, the environment is carefully climate-controlled: temperature and ...



Unfortunately, they're all in different corners of the map. The first potential spawn is located in the Containment Block in the Residential area in southwestern corner of the map.



The code changes each game, but the terminal locations remain constant: Terminal 1: Always in the server room (first two ...



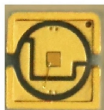
Match the four secret colors to the paint left (in order) for each one, and you get a four-digit code to enter on the wall behind you—opening up the box to your right side.



The room just before this area has a bunch of troggs and also has boxes labeled “Matrix Punchograph 3005-B”, which gives you a new pass card. 4) RED CARD In the room with all the green blobs, ...



The glow of the Palo Alto firewall console illuminates your focused expression, and the room hums softly with the ambient sounds of data streams and spinning drives.



When you enter the server room, you'll interact with the terminal in the center. Then, you'll have to pull a server rack to gain full access to the console.

## Contact Us

For more information, pricing, or custom energy solutions, please contact us:

Website: <https://gdroofing.co.za>

Email: [sales@gdroofing.co.za](mailto:sales@gdroofing.co.za)

Phone: +27 72 418 9365

Address: 22 Electron Avenue, Isando, Johannesburg, 1600, South Africa

This document is for informational purposes only. Specifications subject to change without notice.

