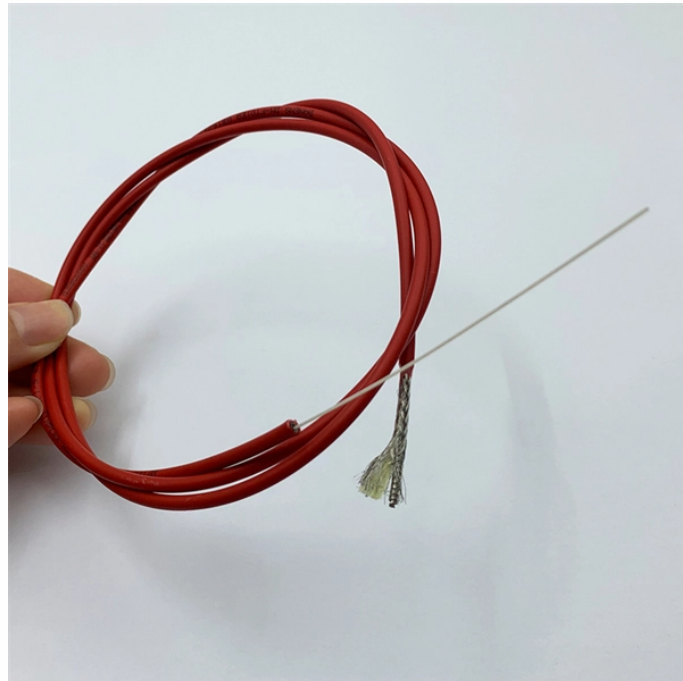
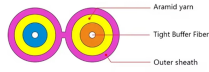


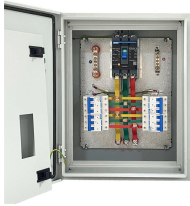
Jamaican Data Center Cabinet DC Power Distribution Unit Construction Case



Jamaican Data Center Cabinet DC Power Distribution Unit Construct



Explore data center electrical planning & distribution systems for reliability, efficiency. Learn from Google and Microsoft data center case studies.



Learn how to design and build a data center with this 8-step guide. Explore key components, best practices & requirements for a secure, scalable facility.



These deployable, seismic and UL-rated cabinets are fully welded, pre-assembled, and come standard with features such as recessed PDU Cavities, and are configurable with or without doors, sides and ...



A Power Distribution Unit (PDU) is a specialized electrical device designed to distribute power from a single input source to multiple output receptacles, specifically engineered for data center and IT ...



The unit provides power distribution, voltage transformation, metering, status monitoring, and load profiling housed in a single, free-standing cabinet. Power from the AC source is routed ...



With GPUs and other accelerators drawing 10X the energy of CPUs, data center infrastructure is shifting toward high-voltage DC (HVDC) power architectures able to support gigawatt ...



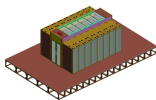
This image illustrates the electrical infrastructure of a data center, showcasing how power flows through various components to ensure continuous and reliable operation.



This article explores how power is connected inside modern data center racks, examining the flow of electricity from facility power feeds to rack PDUs and ultimately to IT equipment.



This guide explores these key components, their functions, placement, and relevant standards in data center electrical design, providing a deeper understanding of how power is ...



This document provides a reference for how advanced solutions can be used to support the design and implementation of a power distribution and monitoring system for a data center.

Contact Us

For more information, pricing, or custom energy solutions, please contact us:

Website: <https://gdroofing.co.za>

Email: sales@gdroofing.co.za

Phone: +27 72 418 9365

Address: 22 Electron Avenue, Isando, Johannesburg, 1600, South Africa

This document is for informational purposes only. Specifications subject to change without notice.

