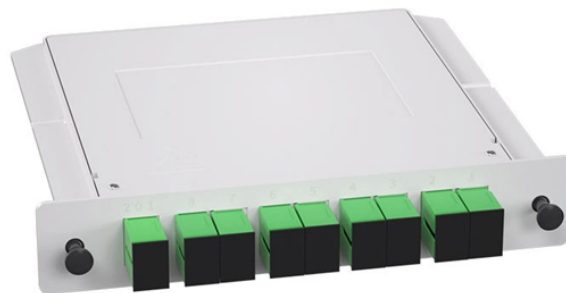


## Key Points for Acceptance of Communication Towers



### Overview

The FCC controls spectrum licensing and tower registration, the FAA regulates anything that could interfere with aircraft, and your local government decides where towers can go and what they look like. Getting any one of these wrong can result in fines, construction delays, or an. Radio Towers are required, as part of the telecommunications systems, for use on the XXX. Building or operating a communications tower means navigating a layered set of rules that span federal agencies, local zoning boards, and private lease. The mitigation objective of this Fact Sheet is to improve the resilience of communications towers, masts and antennas that support vital communications functions at critical facilities so they can continue to operate safely. Communications antennas often are mounted on towers or masts at heights. Bald and Golden Eagle Protection Act (16 U. 668-668d) (Eagle Act); and Migratory Bird Treaty Act (16 U.

## Key Points for Acceptance of Communication Towers



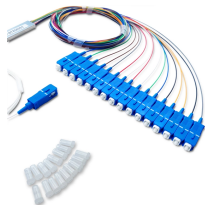
The mitigation objective of this Fact Sheet is to improve the resilience of communications towers, masts and antennas that support vital communications functions at critical facilities so they can continue to ...



To fulfill our statutory obligations under the ESA in a timely and consistent manner, and to assist communication companies in addressing FCC and NEPA environmental impact review requirements, ...



Towers support transmission and radiation of microwave, VHF/UHF, and wireless network signals, making them a key element of communication networks. Communication towers are ...



There are four main types of telecommunication towers: lattice towers, monopole towers, guyed towers, and stealth towers. These towers play a crucial role in enabling wireless ...



Tower siting involves careful planning to prioritise the sharing of existing structures where possible, minimise visual impact, and ensure strict compliance with all safety standards while delivering the ...



Navigating communications tower regulations means understanding FCC rules, local zoning, lease terms, and safety requirements before you build.



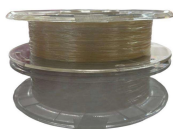
plan to assure structural integrity. Items discovered, that could adversely affect the structure, should be brought to the tower owners attention immediately so its engineers and operations teams can ...



Radio masts and towers are typically tall structures designed to support antennas for telecommunications and broadcasting, including television. There are two main types: guyed and self ...



The objective of this operational test procedure is to facilitate the inspection of general radio tower structure, equipment mounting brackets, lightning finials, ladders and operational testing of obstacle ...



Explore communication tower technology & infrastructure. Learn about tower types, structural components, and key technological advances in design.

## Contact Us

For more information, pricing, or custom energy solutions, please contact us:

Website: <https://gdroofing.co.za>

Email: [sales@gdroofing.co.za](mailto:sales@gdroofing.co.za)

Phone: +27 72 418 9365

Address: 22 Electron Avenue, Isando, Johannesburg, 1600, South Africa

This document is for informational purposes only. Specifications subject to change without notice.

