

Key points for maintaining primary distribution boxes



Overview

Implementing a regular visual inspection routine is crucial for maintaining your distribution box. Monthly checks should include examining the external condition of the enclosure, verifying proper ventilation, and ensuring all labels and warnings are legible. The primary components of a distribution box include the main circuit breaker, which serves as the first line of defense against. 1). Ensure all connections are tight and secure. Look for any signs of burnt or damaged wiring. Testing Test the grounding system. This paper discusses basic electrical dis-tribution maintenance concepts, including the purpose and characteristics of different types of maintenance, frequency of maintenance intervention, and spare parts policies. Regular maintenance is vital to ensure its safety, prevent electrical issues, and extend its lifespan.

Key points for maintaining primary distribution boxes



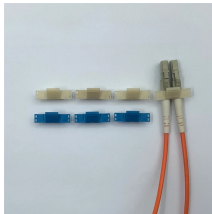
This preventative maintenance checklist ensures electrical distribution system dependability and safety. From circuit breakers to transformers, switches, & cables, this checklist lets ...



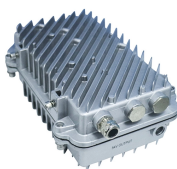
Carrying out maintenance in electrical distribution equipment provides five important benefits. 1. Safety and equipment protection. One of plant managers' most crucial responsibilities is to ensure the ...



Implementing a regular visual inspection routine is crucial for maintaining your distribution box. Monthly checks should include examining the external condition of the enclosure, verifying ...



Explore a comprehensive guide on septic system distribution boxes, covering design, installation, maintenance, and troubleshooting.



For electricians and maintenance professionals, understanding proper MCB distribution box maintenance is essential. This guide outlines practical, field-tested maintenance tips that every ...



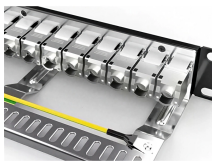
Explore a comprehensive guide on septic system distribution boxes, covering design, installation, maintenance, and troubleshooting.



Your distribution box, the electrical system's core in your home, efficiently distributes power to various circuits. Regular maintenance is vital to ensure its safety, prevent electrical issues, ...



In this article, we will discuss some valuable tips that can help you maintain your distribution board effectively. Distribution boards act as the central hub for electricity distribution ...



This preventative maintenance checklist ensures electrical distribution system dependability and safety. From circuit breakers to ...



By taking these maintenance measures, manufacturers can ensure the reliability and safety of distribution boxes, reduce downtime and repair costs, and extend the service life of equipment.



Inspect for any physical damage to the enclosure. Ensure that all labels and warning signs are legible. Examine for any signs of overheating or arcing. Verify that the box is securely mounted and that ...



Regularly inspect Low Voltage Distribution Boxes every three months to catch problems early and avoid costly repairs. Always clean the boxes using safe methods. Turn off power, use dry ...

Contact Us

For more information, pricing, or custom energy solutions, please contact us:

Website: <https://gdroofing.co.za>

Email: sales@gdroofing.co.za

Phone: +27 72 418 9365

Address: 22 Electron Avenue, Isando, Johannesburg, 1600, South Africa

This document is for informational purposes only. Specifications subject to change without notice.

