

Ladder-type cable tray support

Powerful manufacturers · 20+ years of experience · Support customization

For more product types, please contact customer service>>>

Customizable

Telephone to contact us

Send inquiry

Chat now



Ladder-type cable tray support



Our cable tray design considerations guide details key factors to consider when designing cable tray systems for industrial and commercial applications. Browse or download the cable tray catalog for ...



These trays consist of two parallel side rails connected by rungs at regular intervals, resembling a ladder. They provide excellent cable support, ventilation, and ease of maintenance, making them ...



The following recommendations are intended to be a practical guide to ensure the safe and proper installation of cable ladder and cable tray systems and channel support and other support ...



Husky Ladder Cable Tray systems consists of two longitudinal side members connected by individual transverse members, and is designed for use as a power cable or control cable support system.



Ladder trays are an open-structure cable support system specifically designed to support cables while promoting airflow around them. This design reduces heat accumulation—especially ...



With unmatched quality and service, we offer a variety of styles, materials and finishes available to support virtually any commercial and industrial cable management application requirement.



This publication is intended as a practical guide for the proper and safe* installation of cable ladder systems, cable tray systems, channel support systems and associated supports.



Refers to the approximate height of a cable tray used for specifying. Selecting a specific height will show cable trays with that height, as well as cable tray accessories compatible with that height.

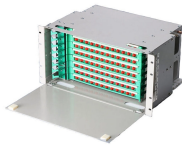
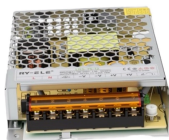


ABB designs and manufactures cable tray systems, including perforated tray, cable ladder, channel tray and strut (metal framing), directly from production facilities in Canada and Saudi Arabia.



The Ladder Tray features light, rugged, tubular steel construction. It is designed for mechanical support and strain relief in long runs of cable and creates a smooth gradual bend for cable.

Contact Us

For more information, pricing, or custom energy solutions, please contact us:

Website: <https://gdroofing.co.za>

Email: sales@gdroofing.co.za

Phone: +27 72 418 9365

Address: 22 Electron Avenue, Isando, Johannesburg, 1600, South Africa

This document is for informational purposes only. Specifications subject to change without notice.

