

Laying galvanized flat steel for galvanized cable trays



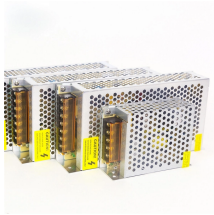
Laying galvanized flat steel for galvanized cable trays



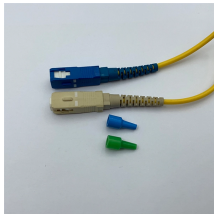
Galvanized cable tray parts are essential for any project that needs long-lasting, rust-free cable support. From understanding the different types of galvanizing to choosing the right parts, I ...



Cable ladders and cable trays should be mounted far enough off the floor or roof to allow the cables to exit through the bottom of the cable ladder or cable tray.



From understanding the type of cable tray they are installing to ensuring proper galvanization done to it, our team of workers are available. The Galvanization of Cable Tray has to ...



Designed for a variety of environments from light commercial to heavy industrial, Eaton offers NEMA and IEC cable support systems in aluminum, pre-galvanized steel, hot dip galvanized steel, stainless ...



In designing supports for a cable tray system, consideration should be given to the loads associated with future cable additions and any additional loading that may be applied to the cable tray system (e.g., ...



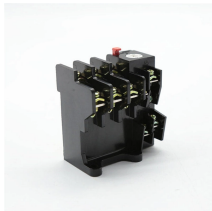
NEMA VE 1-2017 Specifies requirements for metal cable trays and associated fittings designed for use in accordance with the rules of Canadian Electrical Code, Part I and the National Electrical Code®



This method statement covers the site installation of the cable tray & ladders and the requirements of checks to be carried out.



For Cable Tray Installers—This publication is intended as a practical guide for the proper installation of cable tray systems. Cable tray systems design shall comply with NEC Article 392, NEMA VE 1, and ...



The Cable Tray Institute is making available the current edition of this practical guide for the proper installation of aluminum or steel cable tray systems. These guidelines will be useful to engineers, ...



Below is the detailed cable tray installation method statement not only for cable tray but also applicable for GI ladder and trunking for indoor and outdoor applications and in service rooms like pump rooms, ...



The document outlines steps for laying cables, including installing supports, fixing the tray, laying cables with proper spacing, and tying them with cable ties.

Contact Us

For more information, pricing, or custom energy solutions, please contact us:

Website: <https://gdroofing.co.za>

Email: sales@gdroofing.co.za

Phone: +27 72 418 9365

Address: 22 Electron Avenue, Isando, Johannesburg, 1600, South Africa

This document is for informational purposes only. Specifications subject to change without notice.

