

Level 1 2 and 3 distribution boxes should be off the ground



Overview

The National Electrical Code provision 110. 26 clarifies that electrical boxes must be supplied with at least 3 feet of free space surrounding them for safety measures. In this guide, we'll break down everything you need to know to install a distribution box correctly and confidently. Choose the right box based on environment (indoor/outdoor), load capacity, and durability. Check for proper IP/NEMA ratings and material quality. 26 (A) (1), (A) (2) and (A) (3). u2029 The dimension for height of working space for equipment operating at 600 volts (V), nominal, or less to ground and likely to require examination, adjustment, servicing or. Above finished grade or sidewalks, or from any platform or projection from which they might be reached. The distribution box shall be set below the main distribution box, and the switch box shall be set below the distribution box, and the. In modern electrical systems, cable distribution boxes (also known as electrical distribution boxes or distribution boxes) play a crucial role as the key hub for managing, distributing, and protecting circuits.

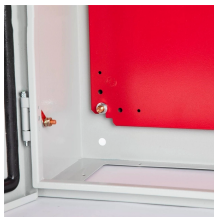
Level 1 2 and 3 distribution boxes should be off the ground



Distribution boxes shall be designed to ensure equal flow and shall be installed on a level concrete slab in natural or compacted soil. Explore a searchable database of US construction and building code. ...



Conduct a detailed survey of the installation site to determine the installation location of the cable distribution box. The installation location should be dry and ventilated, away from ...



The work space shall be clear and extend from the grade, floor or platform to a height of 6 1 / 2 feet or the height of the equipment, whichever is greater.



Any borings and sub-surface data including ground water elevations, underground utility and structural locations that may be furnished or indicated on the plans are presented only as information that is ...



You must use approved materials, choose the right size box, and make sure you ground everything correctly. Always install your boxes where you can reach them later.



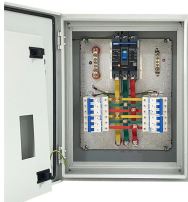
The National Electrical Code provision 110.26 clarifies that electrical boxes must be supplied with at least 3 feet of free space surrounding them for safety measures.



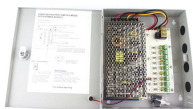
In this guide, we'll break down everything you need to know to install a distribution box correctly and confidently. Choose the right box based on environment (indoor/outdoor), load ...



The wire inlets and outlets in the distribution box and switch box shall be set at the lower bottom of the box. It is strictly prohibited to set them at the top, side, back or door of the box.



Over areas, other than public streets, alleys, roads, and driveways, subject to vehicular traffic other than truck traffic. Over residential property and driveways. Over commercial areas subject to pedestrian ...



Ideally, you should install a breaker box in an unfinished basement or garage, but you can place them inside any room that meets the NEC requirements and local building codes.

Contact Us

For more information, pricing, or custom energy solutions, please contact us:

Website: <https://gdroofing.co.za>

Email: sales@gdroofing.co.za

Phone: +27 72 418 9365

Address: 22 Electron Avenue, Isando, Johannesburg, 1600, South Africa

This document is for informational purposes only. Specifications subject to change without notice.

