

Liechtenstein Micro Module IP65



Liechtenstein Micro Module IP65



Distinguished from TFmini — Open form module, TFmini Plus has been designed with IP65 enclosures, and also passed the vibration test of drone level, which will greatly expand its application range.



Wireless led solar lights outdoor - Integrated solar panel, LED, lithium battery, micro-controller into one system. Automated Switch - Auto on at night / Auto off at sunrise.



Enjoy Free Shipping Worldwide! Limited Time Sale Easy Return.



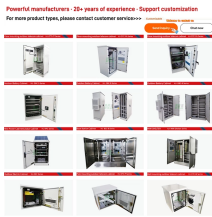
IP65 Waterproof and dustproof level LED chips, 5050 LED package size, brands from Lumileds, Cree, Osram, Luminus and San'an



Wireless led solar lights outdoor - Integrated solar panel, LED, lithium battery, micro-controller into one system. Automated Switch - Auto on at night / Auto off at sunrise.



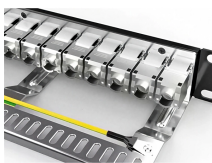
Setting itself apart from the original TFmini, the TFmini Plus has been designed ...



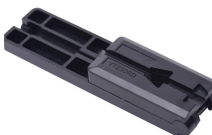
Highly recommended — would definitely buy again! As described, securely packed, quickly shipped.



Notable features include a reduced blind zone of just 10cm and an IP65 ...






IP65-rated 12m LiDAR with 1000Hz output, low power, and compact design. Ideal for outdoor robots, UAVs, and embedded distance measurement applications.



Setting itself apart from the original TFmini, the TFmini Plus has been designed with an IP65 enclosure meaning its "Dust tight & water resistant", and also passed the vibration test of drone level, which will ...



IP65-rated 12m LiDAR with 1000Hz output, low power, and compact design. Ideal for outdoor robots, UAVs, and embedded distance measurement applications.

	<p>IP55/IP65 Outdoor PV Inverter Cabinet with Integrated Distribution Designed for outdoor deployment, the cabinet features weather-resistant construction, efficient ventilation or air conditioning, and ...</p>
	<p>Notable features include a reduced blind zone of just 10cm and an IP65 enclosure, making the TFmini Plus an ideal choice for applications requiring stable, accurate, and high-frequency range detection ...</p>
	<p>Highly recommended — would definitely buy again! As described, ...</p>

Contact Us

For more information, pricing, or custom energy solutions, please contact us:

Website: <https://gdroofing.co.za>

Email: sales@gdroofing.co.za

Phone: +27 72 418 9365

Address: 22 Electron Avenue, Isando, Johannesburg, 1600, South Africa

This document is for informational purposes only. Specifications subject to change without notice.

