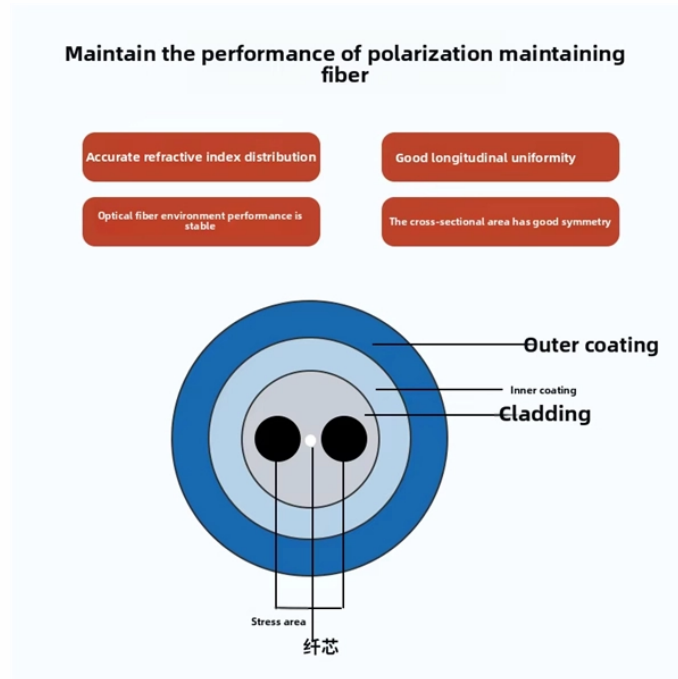


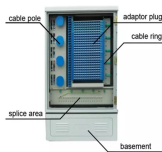
Location diagram for replacing fiber optic drop box



Location diagram for replacing fiber optic drop box



Before one can begin to design a fiber optic cable plant, one needs to establish with the end user or network owner where the network will be built and what communications signals it will carry.



Fiber cable is accessed in FDP Pedestal to terminate the fibers assigned to that location. On the drop side, single fiber cable is run to a tap box where a splice on connector or pig tail is fused on.



Consider splice locations - try to put it on public land wherever possible in a location that is easier for the splice tech to access - safe place to park etc. As for learning ...



The ISP will have one fiber box where the fragile glass fiber is connected to a Fiber connection socket for GPON (Gigabit Ethernet passive optical network).



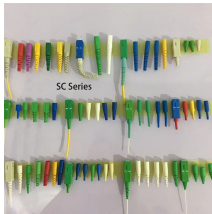
The user will prepare the location for installation, remove any components in the desired space (example a cross frame routing tray) and install the hardware. Refer to sections 3 through 5 of this ...



Jumper troughs (Figure 11) are designed to hold fiber optic cables running from one FDF to another and are attached to the frame in three places at regular intervals.



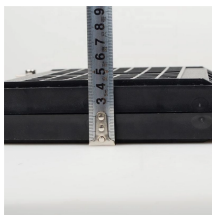
As you will need to connect your Wi-Fi router to the nbn connection box to access your nbn FTTP service, it's important to know where the nbn connection box can and cannot be installed. Your nbn ...



Our telecommunications outside plant services include fiber optic splice diagrams and installation plans, conduit and manhole installation and building penetration designs.



This template showcases a professional layout for Fiber-to-the-Home and Fiber-to-the-Building setups. It visualizes the connection between a central office and various end-user locations.



When Openreach installs the equipment we will install the ONT wherever the incoming fibre cable is located. Where you self-install the ONT, you will have control over when the equipment is installed. ...



Fiber optic network design refers to the specialized processes leading to a successful installation and operation of a fiber optic network.



WIRE MANAGERS, VIDEO SPLITTERS, FIBER TERMINATION PANELS AND SPLICE TRAYS TO BE INSTALLED IN A DEDICATED OSP RACK. DETAILS OF THE EQUIPMENT NEEDED WILL VARY ...

Contact Us

For more information, pricing, or custom energy solutions, please contact us:

Website: <https://gdroofing.co.za>

Email: sales@gdroofing.co.za

Phone: +27 72 418 9365

Address: 22 Electron Avenue, Isando, Johannesburg, 1600, South Africa

This document is for informational purposes only. Specifications subject to change without notice.

