

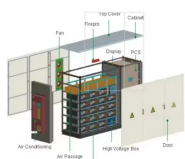
Long-distance Ethernet optical module



Long-distance Ethernet optical module



Optical transceivers have revolutionized data transmission, providing high-speed, long-distance, and secure data transmission capabilities. Optical transceivers have enabled the development of high ...



A 10GBASE-ER optical module is engineered around a specific set of optical specifications that collectively enable reliable 10Gbps Ethernet transmission over long-distance single-mode fiber, ...



The QSFP28 LR4 is a hot-pluggable, four-channel, and full-duplex optical transceiver module designed for long-distance transmission up to 10 km in the 100G Ethernet network with a ...



This electrical-to-optical conversion is what allows Gigabit Ethernet traffic to travel far beyond the distance limits of copper cabling. Inside the SFP module, the process is fully integrated and ...



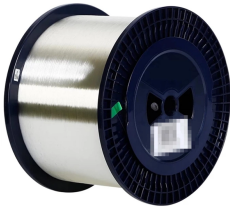
The 1000BASE EX SFP 1310nm 40km Optical Transceiver Module is designed for long-distance Gigabit Ethernet applications, offering reliable and high-performance data transmission over single-mode ...



Discover everything you need to know about SFP optical transceiver modules for long-distance fiber transmission. Compare LX, EX, ZX models and choose the right module for your ...



These transceivers are engineered for long-distance applications, supporting distances from 10 km to 180 km depending on the model and wavelength. They are compatible with a variety of networking ...



This data sheet describes the benefits, specifications, and ordering information for the Cisco SFP Modules for Gigabit Ethernet Applications.



The 100G QSFP28 LR4 optical module is a high-speed optical transceiver compliant with the IEEE 802.3ba standard, specifically designed for long-distance 100G Ethernet transmission. It operates in ...



For robust and cost-effective 10G data transmission, 10G SFP+ optical modules and 10G XFP optical modules remain in high demand. In this guide, we explore the long-distance ...

Contact Us

For more information, pricing, or custom energy solutions, please contact us:

Website: <https://gdroofing.co.za>

Email: sales@gdroofing.co.za

Phone: +27 72 418 9365

Address: 22 Electron Avenue, Isando, Johannesburg, 1600, South Africa

This document is for informational purposes only. Specifications subject to change without notice.

