

Low-loss ONU optical network unit original and genuine product



Overview

Discover our selection of GPON, EPON, and XG (S)PON ONT/ONU devices. Choose from reliable Optical Network Terminals for seamless connectivity and efficient network solutions. An Optical Network Unit (ONU) is a critical device in fiber-optic communication networks that serves as the endpoint on the customer side, converting optical signals from the service provider's fiber network into electrical signals for use in homes and businesses. ONUs play a vital role in. The XGSPON ONU SFP+ transceiver, featuring the MaxLinear PRX126 chipset and 8311 firmware version, delivers 9.953Gbps bi-directional speeds (1270nm TX/1577nm RX) over single-mode fiber (SMF) over distances of up to 20km. A PoE adapter is included only with single-unit purchases.

Low-loss ONU optical network unit original and genuine product



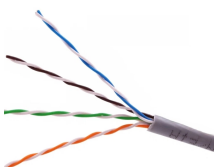
Discover our selection of GPON, EPON, and XG (S)PON ONT/ONU devices. Choose from reliable Optical Network Terminals for seamless connectivity and ...



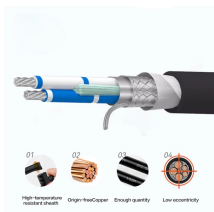
The Pluggable ONU (Optical Network Unit) extends the fiber network into hard-to-reach places or last-mile applications with seamless integration directly into Cambium radios such as ePMP™ ...



A GPON optical network unit with a 2.5 GbE port that delivers 1.2 Gbps uplink / 2.5 Gbps downlink speeds at distances up to 20 km. *PoE power adapter 24V, 0.3A included only with single unit ...



Follow guidelines according to proper ESD procedures. Laser Safety: Radiation emitted by laser devices can be dangerous to human eyes. Avoid eye exposure to direct or indirect radiation.



ONU serie products are the last meter optical network unit for FTTx. It is located at the user end t...



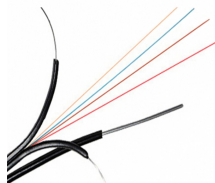
Shop high-quality optical network units for reliable fiber-optic communication. Enjoy advanced features and robust performance for your network needs.



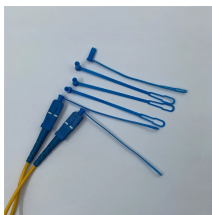
Based on GPON technology, Grandway designs FTTH ONU devices for home users. We offer a wide range of GPON optical network unit with strong working performance and stability.



A GPON optical network unit with a 2.5 GbE port that delivers 1.2 Gbps uplink / 2.5 Gbps downlink speeds at distances up to 20 km. Note. A PoE adapter is included only with single-unit purchases.



ONU is a small home optical node specially developed for standard networking of cable TV or PON operators, with small size, flexible networking, and cost-effective.



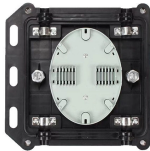
Discover our selection of GPON, EPON, and XG (S)PON ONT/ONU devices. Choose from reliable Optical Network Terminals for seamless connectivity and efficient network solutions.



Follow guidelines according to proper ESD procedures. Laser Safety: Radiation emitted by laser devices can be dangerous to human eyes. Avoid eye ...



SC/APC connectors ensure low insertion loss, while built-in DDM (Digital Diagnostic Monitoring) provides accurate performance tracking of temperature, voltage, and optical power. Ideally suited for ...



SC/APC connectors ensure low insertion loss, while built-in DDM (Digital ...

Contact Us

For more information, pricing, or custom energy solutions, please contact us:

Website: <https://gdroofing.co.za>

Email: sales@gdroofing.co.za

Phone: +27 72 418 9365

Address: 22 Electron Avenue, Isando, Johannesburg, 1600, South Africa

This document is for informational purposes only. Specifications subject to change without notice.

