

Low-voltage electrical components in the distribution box



Low-voltage electrical components in the distribution box



LV distribution boards, part of the electrical distribution system, securely distribute low-voltage power to facility circuits. Integrated with ACBs and MCCBs, they provide protection from ...



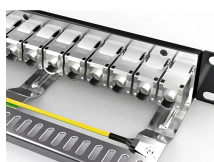
Key internal components like low voltage circuit breakers, leakage protection switches, dual power automatic transfer switches, and surge protection devices work together to ensure safety ...



Discover our full range of safe and reliable solutions for low voltage electrical distribution products and systems, including circuit breakers, switches, and enclosures.



These boxes contain components such as main switches, residual-current devices (RCDs), and miniature circuit breakers (MCBs), which safeguard users from overcurrent, short circuits, and ...



Quick 5-minute read: Discover the main types, essential components, and key maintenance tips for low voltage power distribution cabinets. Learn how Qinghao Electric's intelligent ...



This comprehensive portfolio for low-voltage power distribution and electrical installation technology covers every requirement – from the switchboard to the socket outlet.



What is a Low-Voltage Distribution Panel? A low-voltage distribution panel is the assembly that receives low-voltage power, then routes it through protective devices to downstream ...



These critical components house essential elements, including circuit breakers, busbars, protective devices, and monitoring systems that ensure reliable power distribution while maintaining ...



This article explores the fundamental role of low voltage distribution cabinets, their key features, and the critical technologies that drive their functionality.



This paper provides a basic overview of the definitions, components, applications and other details associated with low voltage distribution equipment. It covers electrical panelboards, switchboards ...

Contact Us

For more information, pricing, or custom energy solutions, please contact us:

Website: <https://gdroofing.co.za>

Email: sales@gdroofing.co.za

Phone: +27 72 418 9365

Address: 22 Electron Avenue, Isando, Johannesburg, 1600, South Africa

This document is for informational purposes only. Specifications subject to change without notice.

