

**Luxembourg AI Server Silicon
Photonics Manufacturer**



Luxembourg AI Server Silicon Photonics Manufacturer



With its two decades of experience in Photonics-SOI and industrial capacity to scale the technology, Soitec is uniquely placed to support market demand while maintaining high performance ...



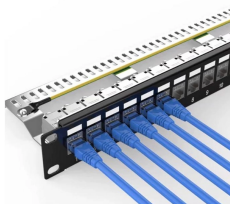
As data centres continue to confront the mounting demands of AI workloads, Soitec is one such company eager to pioneer breakthrough semiconductor solutions through its Edge & Cloud ...



We accompany organisations of all sizes throughout their entire AI journey. Access MeluXina-AI hosted in Tier IV data centres and operated under strict security standards, giving you the compute and data ...



(IN BRIEF) STMicroelectronics has begun high-volume production of its PIC100 silicon photonics platform, a technology designed to support hyperscalers deploying high-speed optical ...



Discover all relevant Silicon Photonics Companies in Luxembourg, including X-CITE S.A. and MGLTech S.A.



The Luxembourg AI Factory is a central hub driving AI adoption across multiple industries, providing end-to-end support from ideation and data preparation to model deployment and ongoing optimisation.



Rethinking the limits of AI, Lightmatter merges photonics and computing to build a future where speed, efficiency, and intelligence converge.



LIGENTEC is a B2B Manufacturer of Photonic Integrated Circuits for High-Tech areas such as AI, Quantum Technologies, LIDAR and Biosensors.



Q.ANT's Native Processing Server executes demanding AI workloads directly in light. While CMOS processors excel at linear, sequential processing, photonic processors are the natural hardware fit for ...



The Luxembourg AI Factory supports the development and validation of AI solutions, including experimental development, the use of regulatory environments (sandboxes), data ...

Contact Us

For more information, pricing, or custom energy solutions, please contact us:

Website: <https://gdroofing.co.za>

Email: sales@gdroofing.co.za

Phone: +27 72 418 9365

Address: 22 Electron Avenue, Isando, Johannesburg, 1600, South Africa

This document is for informational purposes only. Specifications subject to change without notice.

